

Product information presented here reflects conditions at time of publication. Consult factory regarding discrepancies or inconsistencies.



MAIL TO: P.O. BOX 16347 • Louisville, KY 40256-0347  
SHIP TO: 3649 Cane Run Road • Louisville, KY 40211-1961  
TEL: (502) 778-2731 • 1 (800) 928-PUMP • FAX: (502) 774-3624

Visit our website:  
zoellerpumps.com

## REPLACEMENT PARTS LIST FOR MODELS:

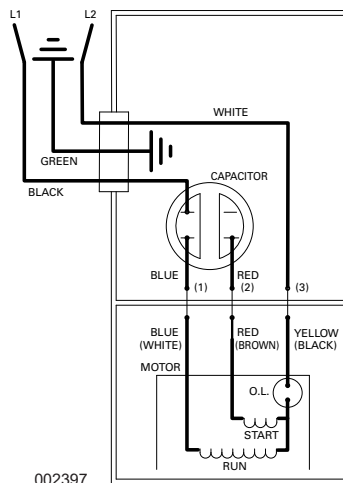
SCREW IN STATOR MOTOR DESIGN  
FOR GLUE IN STATOR MOTOR DESIGN  
(SEE PAGE 5)

**N270 NONAUTOMATIC 115V**  
**E270 NONAUTOMATIC 230V**  
**N4270 NONAUTOMATIC 115V**  
**E4270 NONAUTOMATIC 230V**

### TO ORDER REPLACEMENT PARTS

PLEASE FURNISH THE FOLLOWING INFORMATION:

- Model number
- Part number of pump
- Part number and description of part



002397

WIRING DIAGRAM FOR MODELS  
"N270-F, E270-F, N4270-F, E4270-F"  
1/20 thru Current

# REPLACEMENT PARTS LIST FOR SINGLE SEAL MODELS "N270" AND "E270"

See page 4 for illustration.

| REF NO.                  | QTY | Kit | DESCRIPTION                           | NOTES | N270-F<br>01/20 thru<br>CURRENT. | E270-F<br>01/20 thru<br>CURRENT. |
|--------------------------|-----|-----|---------------------------------------|-------|----------------------------------|----------------------------------|
| 1                        | 1   |     | HANDLE                                |       | 267032                           | 267032                           |
| 2                        | 1   |     | CASE ASSEMBLY                         |       | 267051                           | 267051                           |
| 3                        | 1   | *   | CASE GASKET                           |       | 267007                           | 267007                           |
| 4                        | 1   |     | POWER CORD - 115V                     | 3     | 011551                           | N/A                              |
|                          |     |     | POWER CORD - 230V                     |       | N/A                              | 003618                           |
| 5                        | 1   | *   | CORD SEAL ASSEMBLY                    |       | 156778                           | 156778                           |
| 6                        | 1   |     | MOTOR HOUSING ASSEMBLY                |       | 156811                           | 156811                           |
| 7                        | 1   |     | STATOR ASSEMBLY - 115V                | 3     | 156808                           | N/A                              |
|                          |     |     | STATOR ASSEMBLY - 230V                |       | N/A                              | 156812                           |
| 8                        | 1   |     | ROTOR & BEARING ASSEMBLY              |       | 156777                           | 156777                           |
| 9                        | 1   | *   | ROTOR BEARING                         |       | 009540                           | 009540                           |
| 10                       | 1   | *   | 21.5 Oz OIL CAN                       |       | 010330                           | 010330                           |
| 11                       | 1   | *   | SHAFT SEAL ASSEMBLY                   |       | 011681                           | 011681                           |
| 12                       | 1   | *   | MOTOR HOUSING SEAL                    |       | 034007                           | 034007                           |
| 13                       | 1   |     | BASE                                  |       | 010973                           | 010973                           |
| 14                       | 2   |     | HANDLE RETAINERS                      |       | 267053                           | 267053                           |
| 15                       | 1   | *   | WIRE PACK                             |       | 011548                           | 011548                           |
| 16                       | 1   |     | CAPACITOR ASSEMBLY                    |       | 156807                           | 156807                           |
| 17                       | 1   |     | PUMP HOUSING                          |       | 155321                           | 155321                           |
| 18                       | 1   |     | IMPELLER                              |       | 011690                           | 011690                           |
| 19                       | 2   | *   | TEST PLUG                             |       | 034090                           | 034090                           |
| 20                       | 4   | *   | SCREW - CASE (1/4-20X3/4)             |       | 001916                           | 001916                           |
| 21                       | 2   | *   | SCREW - RETAINER (10-24 X3/8)         |       | 001883                           | 001883                           |
| 22                       | 2   | *   | SCREW - GROUND & CAPACITOR (6-32X1/4) |       | 001877                           | 001877                           |
| 23                       | 3   | *   | THRU WALL TERMINAL                    |       | 003402                           | 003402                           |
| 24                       | 1   |     | BASE O-RING SEAL                      |       | 005701                           | 005701                           |
| 25                       | 10  |     | SCREW - BASE (10-10X1)                |       | 005326                           | 005326                           |
| 26                       | 4   | *   | SCREW - MOTOR HOUSING (1/4-20X7/8)    |       | 012491                           | 012491                           |
| 27                       | 2   | *   | SCREW - STATOR (8-32 X 4-9/32)        |       | 155319                           | 155319                           |
| <input type="checkbox"/> | 1   |     | REBUILD KIT                           |       | 156775                           | 156775                           |

\* Items included in rebuild kit.       Not shown in illustration.

## Service parts notes:

- 1) If an "X" follows model no., or date mfg. on brass ID tag, consult factory for ordering any parts.
- 2) See FM0160 Parts Price Sheet for listing of parts prices.
- 3) "N/A" indicates not applicable.

# REPLACEMENT PARTS LIST FOR DOUBLE SEAL MODELS "N4270" AND "E4270"

See page 4 for illustration.

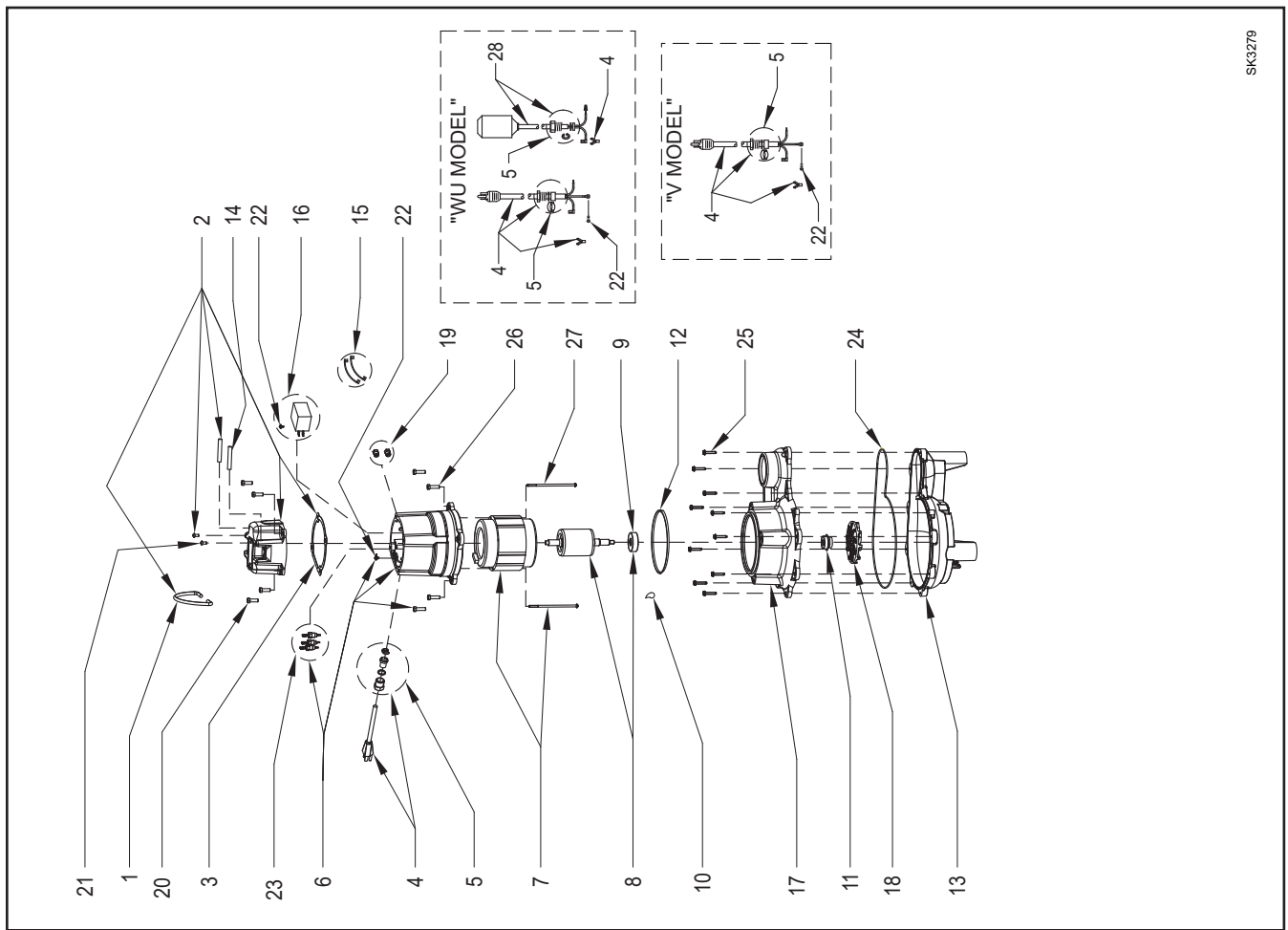
| REF NO. | QTY | Kit | DESCRIPTION                                  | NOTES | N4270-F<br>01/20 thru<br>CURRENT. | E4270-F<br>01/20 thru<br>CURRENT. |
|---------|-----|-----|--|-------|-----------------------------------|-----------------------------------|
| 1       | 1   |     | HANDLE                                       |       | 267032                            | 267032                            |
| 2       | 1   |     | CASE ASSEMBLY                                |       | 267051                            | 267051                            |
| 3       | 1   | *   | CASE GASKET                                  |       | 267007                            | 267007                            |
| 4       | 1   |     | POWER CORD - 115V                            | 3     | 011551                            | N/A                               |
|         |     |     | POWER CORD - 230V                            |       | N/A                               | 003618                            |
| 5       | 1   | *   | CORD SEAL ASSEMBLY                           |       | 156778                            | 156778                            |
| 6       | 1   |     | MOTOR HOUSING ASSEMBLY                       |       | 156811                            | 156811                            |
| 7       | 1   |     | STATOR ASSEMBLY - 115V                       | 3     | 156808                            | N/A                               |
|         |     |     | STATOR ASSEMBLY - 230V                       |       | N/A                               | 156812                            |
| 8       | 1   |     | ROTOR & BEARING ASSEMBLY                     |       | 156814                            | 156814                            |
| 9       | 1   | *   | ROTOR BEARING                                |       | 009540                            | 009540                            |
| 10      | 1   | *   | 28 Oz OIL CAN                                |       | 010331                            | 010331                            |
| 11      | 1   | *   | 12 Oz OIL CAN                                |       | 010158                            | 010158                            |
| 12      | 2   | *   | SHAFT SEAL ASSEMBLY                          |       | 011681                            | 011681                            |
| 13      | 2   | *   | MOTOR HOUSING & ADAPTER SEAL                 |       | 034007                            | 034007                            |
| 14      | 1   |     | BASE   |       | 008646                            | 008646                            |
| 15      | 2   |     | HANDLE RETAINERS                             |       | 267053                            | 267053                            |
| 16      | 1   | *   | WIRE PACK                                    |       | 011548                            | 011548                            |
| 17      | 1   |     | CAPACITOR ASSEMBLY                           |       | 156807                            | 156807                            |
| 18      | 1   |     | ADAPTER                                      |       | 156813                            | 156813                            |
| 19      | 1   |     | PUMP HOUSING                                 |       | 155742                            | 155742                            |
| 20      | 1   |     | IMPELLER                                     |       | 011690                            | 011690                            |
| 21      | 3   | *   | TEST PLUG                                    |       | 034090                            | 034090                            |
| 22      | 9   | *   | SCREW - CASE & BASE (1/4-20X3/4)             |       | 001916                            | 001916                            |
| 23      | 3   | *   | SCREW - RETAINER & BASE (10-24 X3/8)         |       | 001883                            | 001883                            |
| 24      | 2   | *   | SCREW - GROUND & CAPACITOR (6-32X1/4)        |       | 001877                            | 001877                            |
| 25      | 5   | *   | THRU WALL TERMINAL                           |       | 003402                            | 003402                            |
| 26      | 1   | *   | SNAP RING & WASHER                           |       | 010167                            | 010167                            |
| 27      | 8   | *   | SCREW - MOTOR HOUSING & ADAPTER (1/4-20X7/8) |       | 012491                            | 012491                            |
| 28      | 2   | *   | SCREW - STATOR (8-32 X 4-9/32)               |       | 155319                            | 155319                            |
| ☐       | 1   |     | REBUILD KIT                                  |       | 156776                            | 156776                            |

\* Items included in rebuild kit. ☐ Not shown in illustration.

## Service parts notes:

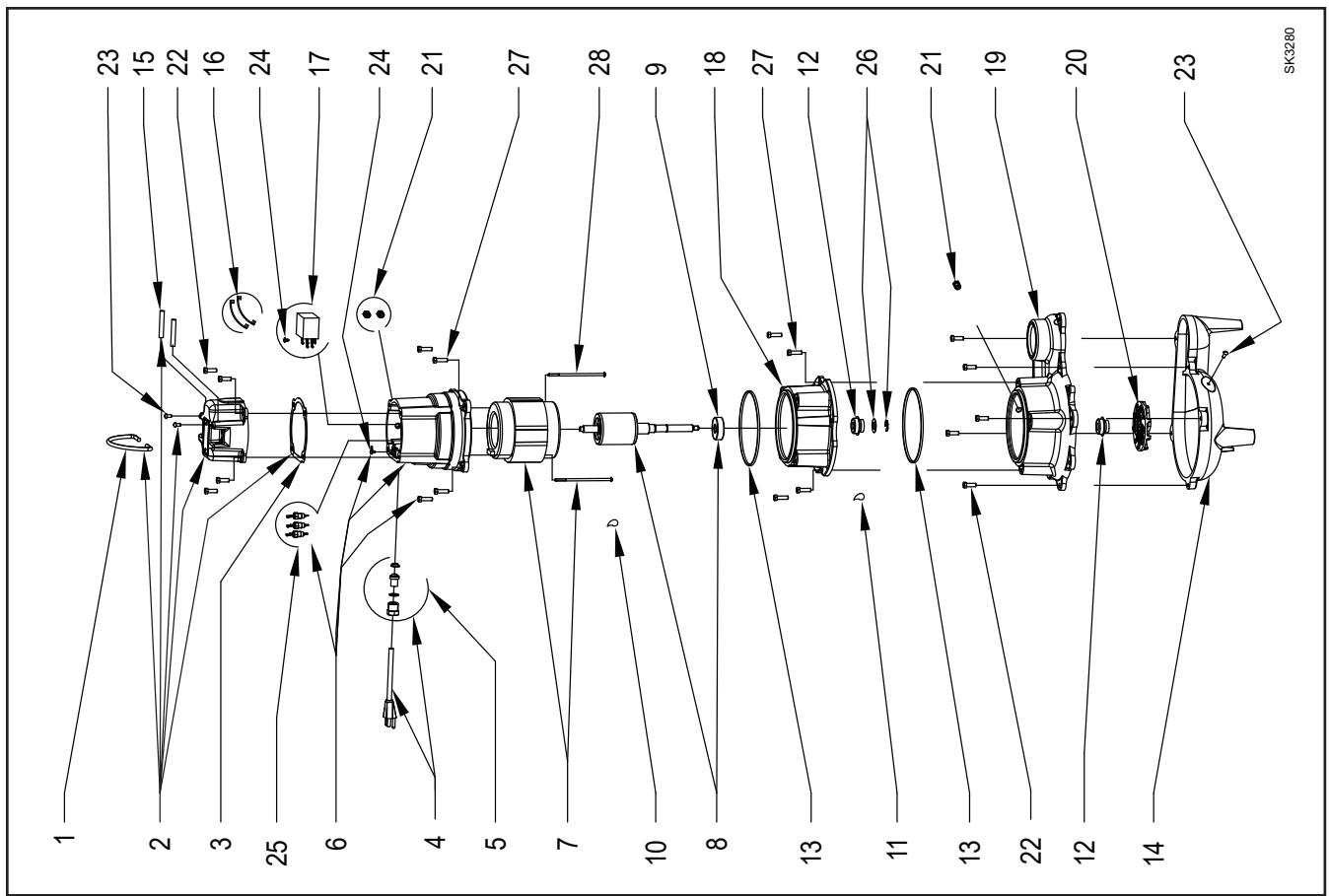
- 1) If an "X" follows model no., or date mfg. on brass ID tag, consult factory for ordering any parts.
- 2) See FM0160 Parts Price Sheet for listing of parts prices.
- 3) "N/A" indicates not applicable.

REPLACEMENT PARTS ILLUSTRATION FOR MODELS "N270" AND "E270"



SK3279

REPLACEMENT PARTS ILLUSTRATION FOR MODELS "N4270" AND "E4270"



SK3280

# REPLACEMENT PARTS LIST FOR MODELS:

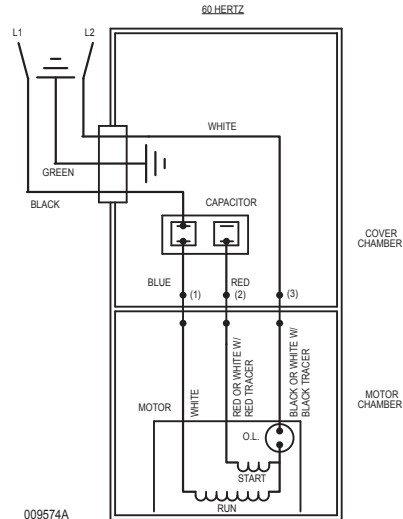
**N270 NONAUTOMATIC 115V**  
**E270 NONAUTOMATIC 230V**  
**N4270 NONAUTOMATIC 115V**  
**E4270 NONAUTOMATIC 230V**

Consult factory for all other models

### ***TO ORDER REPLACEMENT PARTS***

**PLEASE FURNISH THE FOLLOWING INFORMATION:**

- Model number
- Part number of pump
- Part number and description of part



WIRING DIAGRAM FOR MODELS  
"N270-F, E270-F, N4270-F, E4270-F"  
6/95 thru 12/19

REPLACEMENT PARTS LIST FOR SINGLE SEAL MODELS "N270" and "E270".

See page 8 for illustration.

|         |                         | MODELS: |       |                |                |                |                |                 |                |                |                |                 |                 |
|---------|-------------------------|---------|-------|----------------|----------------|----------------|----------------|-----------------|----------------|----------------|----------------|-----------------|-----------------|
| REF NO. | DESCRIPTION             | QTY     | NOTES | N270-A         | N270-B         | N270-C         | N270-D         | N270-E          | E270-A         | E270-B         | E270-C         | E270-D          | E270-E          |
|         |                         |         |       | 6/95 thru 5/97 | 6/97 thru 3/07 | 4/07 thru 4/08 | 5/08 thru 8/09 | 9/09 thru 12/19 | 6/95 thru 5/97 | 6/97 thru 3/07 | 4/07 thru 6/08 | 7/08 thru 12/08 | 1/09 thru 12/19 |
| 1       | HANDLE                  | 1       |       | 267032         | 267032         | 267032         | 267032         | 267032          | 267032         | 267032         | 267032         | 267032          | 267032          |
| 2       | CASE ASSEMBLY           | 1       |       | 267051         | 011549         | 011549         | 011549         | 011549          | 267051         | 011549         | 011549         | 011549          | 011549          |
| 3       | CASE GASKET             | 1       |       | 267007         | 267007         | 267007         | 267007         | 267007          | 267007         | 267007         | 267007         | 267007          | 267007          |
| 4       | POWER CORD              | 1       | 3     | 010155         | 011551         | 011551         | 011551         | 011551          | 011558         | 003618         | 003618         | 003618          | 003618          |
| 5       | SEAL ASSEMBLY POWER     | 1       |       | 010154         | 010154         | 010154         | 010154         | 010154          | 010154         | 010154         | 010154         | 010154          | 010154          |
| 6       | MOTOR HOUSING ASMSOURCE | 1       | 5     | 010156         | 010156         | 010156         | 010156         | 010156          | 010157         | 010157         | 010157         | 010157          | 010157          |
|         | MOTOR HOUSING ASMZT     |         |       | N/A            | N/A            | N/A            | N/A            | 150013          | N/A            | N/A            | N/A            | N/A             | 150014          |
| 7       | ROTOR & BRG ASMSOURCE   | 1       | 5     | 010984         | 010984         | 010984         | 010984         | 010984          | 010984         | 010984         | 010984         | 010984          | 010984          |
|         | ROTOR & BRG ASMZT       |         |       | N/A            | N/A            | N/A            | N/A            | 150015          | N/A            | N/A            | N/A            | N/A             | 150015          |
| 8       | BEARING RADIAL          | 1       |       | 009540         | 009540         | 009540         | 009540         | 009540          | 009540         | 009540         | 009540         | 009540          | 009540          |
| 9       | 25 OZ OIL CAN           | 1       |       | 010330         | 010330         | 010330         | 010330         | 010330          | 010330         | 010330         | 010330         | 010330          | 010330          |
| 10      | SEAL ASSEMBLY           | 1       |       | 011681         | 011681         | 011681         | 011681         | 011681          | 011681         | 011681         | 011681         | 011681          | 011681          |
| 11      | SQUARE RING SEAL        | 1       |       | 267006         | 267006         | 267006         | 267006         | 267006          | 267006         | 267006         | 267006         | 267006          | 267006          |
| 12      | BASE                    | 1       |       | 010973         | 010973         | 010973         | 010973         | 010973          | 010973         | 010973         | 010973         | 010973          | 010973          |
| 13      | HANDLE RETAINERS        | 2       |       | 267053         | 267053         | 267053         | 267053         | 267053          | 267053         | 267053         | 267053         | 267053          | 267053          |
| 14      | TERM INSULATOR          | 2       |       | 001797         | N/A            | N/A            | N/A            | N/A             | 001797         | N/A            | N/A            | N/A             | N/A             |
| 15      | WIRE PACK               | 1       |       | 010159         | 011548         | 011548         | 011548         | 011548          | 010159         | 011548         | 011548         | 011548          | 011548          |
| 16      | CAPACITOR ASSEMBLY      | 1       | 4     | 010160         | 011550         | 011550         | 011550         | 011550          | 010160         | 011550         | 011550         | 011550          | 011550          |
| 17      | PUMP HOUSING            | 1       |       | 009519         | 009519         | 009519         | 009519         | 009519          | 009519         | 009519         | 009519         | 009519          | 009519          |
| 18      | IMPELLER                | 1       |       | 011690         | 011690         | 011690         | 011690         | 011690          | 011690         | 011690         | 011690         | 011690          | 011690          |
| 19      | SCREW 10-24x3/8         | 2       |       | 001883         | 001883         | 001883         | 001883         | 001883          | 001883         | 001883         | 001883         | 001883          | 001883          |
| 20      | SCREW 1/4-20x3/4        | 4       |       | 001916         | 001916         | 001916         | 001916         | 001916          | 001916         | 001916         | 001916         | 001916          | 001916          |
| 21      | SCREW 6-32x7/16         | 1       |       | 004644         | 004644         | 004644         | 004644         | 004644          | 004644         | 004644         | 004644         | 004644          | 004644          |
| 22      | WASHER #6               | 1       |       | 002117         | 002117         | 002117         | 002117         | 002117          | 002117         | 002117         | 002117         | 002117          | 002117          |
| 23      | GROUND SCREW            | 3       |       | 001877         | 001877         | 001877         | 001877         | 001877          | 001877         | 001877         | 001877         | 001877          | 001877          |
| 24      | THRU WALL TERMINAL      | 3       |       | 003402         | 003402         | 003402         | 003402         | 003402          | 003402         | 003402         | 003402         | 003402          | 003402          |
| 25      | O-RING                  | 1       |       | 005701         | 005701         | 005701         | 005701         | 005701          | 005701         | 005701         | 005701         | 005701          | 005701          |
| 26      | SCREW #10-10X1 HHX WASH | 10      |       | 005326         | 005326         | 005326         | 005326         | 005326          | 005326         | 005326         | 005326         | 005326          | 005326          |
| 27      | TEST PLUG               | 2       |       | 034090         | 034090         | 034090         | 034090         | 034090          | 034090         | 034090         | 034090         | 034090          | 034090          |
| 28      | SCREWS                  | 4       |       | 012491         | 012491         | 012491         | 012491         | 012491          | 012491         | 012491         | 012491         | 012491          | 012491          |
| 29      | CAP BRACKET             | 1       |       | 153350         | 153350         | 153350         | 153350         | 153350          | 153350         | 153350         | 153350         | 153350          | 153350          |
| 0       | REBUILD KIT             | 1       |       | 010173         | 010173         | 010173         | 010173         | 010173          | 010173         | 010173         | 010173         | 010173          | 010173          |

• Items included in Rebuild Kit.

✘ Not shown in illustration.

NOTES:

- 1) See FM0160 parts price sheet for listing of parts pricing.
- 2) "N/A" indicates not applicable.
- 3) If an "X" follows model number or date of manufacture on brass I.D. tag, consult factory for ordering of this part.
- 4) The capacitor assembly on "REV. A" pumps only (Item 16), includes the case assembly (Item 2) which the customer must also replace.
- 5) When ordering motor housing (Item 6) or rotor and bearing (Item 7), specify either source or ZT motor. ZT stator can be identified by a completely round stator.

**REPLACEMENT PARTS LIST FOR DOUBLE SEAL MODELS "N4270" and "E4270".**

See page 8 for illustration.

| REF NO. | DESCRIPTION              | QTY | NOTES | MODELS: |         |         |         |         |         |         |         |         |         |        |        |        |        |        |        |
|---------|--------------------------|-----|-------|---------|---------|---------|---------|---------|---------|---------|---------|---------|---------|--------|--------|--------|--------|--------|--------|
|         |                          |     |       | N4270-A | N4270-B | N4270-C | N4270-D | N4270-E | E4270-A | E4270-B | E4270-C | E4270-D | E4270-E |        |        |        |        |        |        |
| 1       | HANDLE                   | 1   |       | 267032  | 267032  | 267032  | 267032  | 267032  | 267032  | 267032  | 267032  | 267032  | 267032  | 267032 | 267032 | 267032 | 267032 | 267032 | 267032 |
| 2       | CASE ASSEMBLY            | 1   |       | 267051  | 011549  | 011549  | 011549  | 011549  | 011549  | 011549  | 011549  | 011549  | 011549  | 011549 | 011549 | 011549 | 011549 | 011549 | 011549 |
| 3       | CASE GASKET              | 1   |       | 267007  | 267007  | 267007  | 267007  | 267007  | 267007  | 267007  | 267007  | 267007  | 267007  | 267007 | 267007 | 267007 | 267007 | 267007 | 267007 |
| 4       | POWER CORD               | 1   | 3     | 010155  | 011551  | 011551  | 011551  | 011551  | 011551  | 011551  | 011551  | 011551  | 011551  | 011551 | 011551 | 011551 | 011551 | 011551 | 011551 |
| 5       | SEAL ASSEMBLY POWER      | 1   |       | 010154  | 010154  | 010154  | 010154  | 010154  | 010154  | 010154  | 010154  | 010154  | 010154  | 010154 | 010154 | 010154 | 010154 | 010154 | 010154 |
| 6       | MOTOR HOUSING ASM/SOURCE | 1   | 5     | 010156  | 010156  | 010156  | 010156  | 010156  | 010156  | 010156  | 010156  | 010156  | 010156  | 010156 | 010156 | 010156 | 010156 | 010156 | 010156 |
|         | MOTOR HOUSING ASM/ZT     |     |       | N/A     | N/A     | N/A     | N/A     | N/A     | N/A     | N/A     | N/A     | N/A     | N/A     | N/A    | N/A    | N/A    | N/A    | N/A    | N/A    |
| 7       | ROTOR & BRG ASM/SOURCE   | 1   | 5     | 010986  | 010986  | 010986  | 010986  | 010986  | 010986  | 010986  | 010986  | 010986  | 010986  | 010986 | 010986 | 010986 | 010986 | 010986 | 010986 |
|         | ROTOR & BRG ASM/ZT       |     |       | N/A     | N/A     | N/A     | N/A     | N/A     | N/A     | N/A     | N/A     | N/A     | N/A     | N/A    | N/A    | N/A    | N/A    | N/A    | N/A    |
| 8       | 36.5 OZ OIL CAN          | 1   |       | 010331  | 010331  | 010331  | 010331  | 010331  | 010331  | 010331  | 010331  | 010331  | 010331  | 010331 | 010331 | 010331 | 010331 | 010331 | 010331 |
| 9       | 16 OZ OIL CAN            | 1   |       | 010158  | 010158  | 010158  | 010158  | 010158  | 010158  | 010158  | 010158  | 010158  | 010158  | 010158 | 010158 | 010158 | 010158 | 010158 | 010158 |
| 10      | SEAL ASSEMBLY            | 2   |       | 011881  | 011881  | 011881  | 011881  | 011881  | 011881  | 011881  | 011881  | 011881  | 011881  | 011881 | 011881 | 011881 | 011881 | 011881 | 011881 |
| 11      | SQUARE RING SEAL         | 2   |       | 267006  | 267006  | 267006  | 267006  | 267006  | 267006  | 267006  | 267006  | 267006  | 267006  | 267006 | 267006 | 267006 | 267006 | 267006 | 267006 |
| 12      | BASE                     | 1   |       | 153009  | 153009  | 153009  | 153009  | 153009  | 153009  | 153009  | 153009  | 153009  | 153009  | 153009 | 153009 | 153009 | 153009 | 153009 | 153009 |
| 13      | HANDLE RETAINERS         | 2   |       | 267053  | 267053  | 267053  | 267053  | 267053  | 267053  | 267053  | 267053  | 267053  | 267053  | 267053 | 267053 | 267053 | 267053 | 267053 | 267053 |
| 14      | TERM INSULATOR           | 2   |       | 007797  | N/A     | N/A     | N/A     | N/A     | N/A     | N/A     | N/A     | N/A     | N/A     | N/A    | N/A    | N/A    | N/A    | N/A    | N/A    |
| 15      | WIRE PACK                | 1   |       | 010159  | 011548  | 011548  | 011548  | 011548  | 011548  | 011548  | 011548  | 011548  | 011548  | 011548 | 011548 | 011548 | 011548 | 011548 | 011548 |
| 16      | CAPACITOR ASSEMBLY       | 1   | 4     | 010160  | 011550  | 011550  | 011550  | 011550  | 011550  | 011550  | 011550  | 011550  | 011550  | 011550 | 011550 | 011550 | 011550 | 011550 | 011550 |
| 17      | BEARING                  | 1   |       | 009540  | 009540  | 009540  | 009540  | 009540  | 009540  | 009540  | 009540  | 009540  | 009540  | 009540 | 009540 | 009540 | 009540 | 009540 | 009540 |
| 18      | ADAPTER                  | 1   |       | 011679  | 011679  | 011679  | 011679  | 011679  | 011679  | 011679  | 011679  | 011679  | 011679  | 011679 | 011679 | 011679 | 011679 | 011679 | 011679 |
| 19      | PUMP HOUSING             | 1   |       | 010939  | 010939  | 010939  | 010939  | 010939  | 010939  | 010939  | 010939  | 010939  | 010939  | 010939 | 010939 | 010939 | 010939 | 010939 | 010939 |
| 20      | IMPELLER                 | 1   |       | 011690  | 011690  | 011690  | 011690  | 011690  | 011690  | 011690  | 011690  | 011690  | 011690  | 011690 | 011690 | 011690 | 011690 | 011690 | 011690 |
| 21      | TEST PLUG                | 3   |       | 034090  | 034090  | 034090  | 034090  | 034090  | 034090  | 034090  | 034090  | 034090  | 034090  | 034090 | 034090 | 034090 | 034090 | 034090 | 034090 |
| 22      | SCREW 1/4-20X3/4         | 13  |       | 001916  | 001916  | 001916  | 001916  | 001916  | 001916  | 001916  | 001916  | 001916  | 001916  | 001916 | 001916 | 001916 | 001916 | 001916 | 001916 |
| 23      | SCREW 10-24X3/8          | 2   |       | 001883  | 001883  | 001883  | 001883  | 001883  | 001883  | 001883  | 001883  | 001883  | 001883  | 001883 | 001883 | 001883 | 001883 | 001883 | 001883 |
| 24      | SCREW 6-32X7/16          | 1   |       | 004644  | 004644  | 004644  | 004644  | 004644  | 004644  | 004644  | 004644  | 004644  | 004644  | 004644 | 004644 | 004644 | 004644 | 004644 | 004644 |
| 25      | WASHER #6                | 1   |       | 002117  | 002117  | 002117  | 002117  | 002117  | 002117  | 002117  | 002117  | 002117  | 002117  | 002117 | 002117 | 002117 | 002117 | 002117 | 002117 |
| 26      | GROUND SCREW             | 3   |       | 001877  | 001877  | 001877  | 001877  | 001877  | 001877  | 001877  | 001877  | 001877  | 001877  | 001877 | 001877 | 001877 | 001877 | 001877 | 001877 |
| 27      | THRU WALL TERMINAL       | 5   |       | 003402  | 003402  | 003402  | 003402  | 003402  | 003402  | 003402  | 003402  | 003402  | 003402  | 003402 | 003402 | 003402 | 003402 | 003402 | 003402 |
| 28      | SNAP RING & WASHER       | 1   |       | 010167  | 010167  | 010167  | 010167  | 010167  | 010167  | 010167  | 010167  | 010167  | 010167  | 010167 | 010167 | 010167 | 010167 | 010167 | 010167 |
| 29      | SCREW S                  | 4   |       | 012491  | 012491  | 012491  | 012491  | 012491  | 012491  | 012491  | 012491  | 012491  | 012491  | 012491 | 012491 | 012491 | 012491 | 012491 | 012491 |
| 30      | CAP BRACKET              | 1   |       | 153350  | 153350  | 153350  | 153350  | 153350  | 153350  | 153350  | 153350  | 153350  | 153350  | 153350 | 153350 | 153350 | 153350 | 153350 | 153350 |
| 0       | REBUILD KIT              | 1   |       | 010166  | 010166  | 010166  | 010166  | 010166  | 010166  | 010166  | 010166  | 010166  | 010166  | 010166 | 010166 | 010166 | 010166 | 010166 | 010166 |

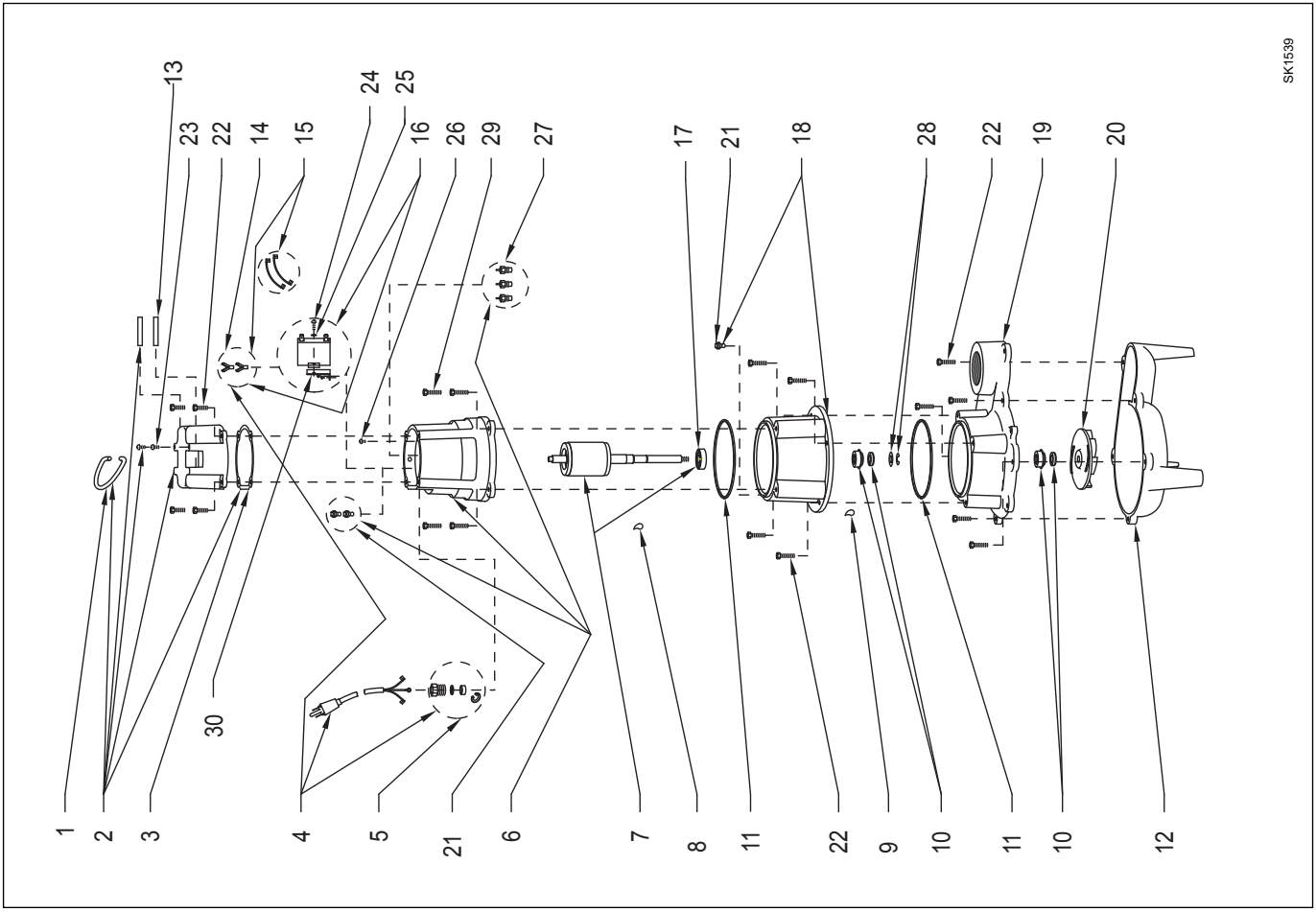
• Items included in Rebuild Kit.

☒ Not shown in illustration.

**NOTES:**

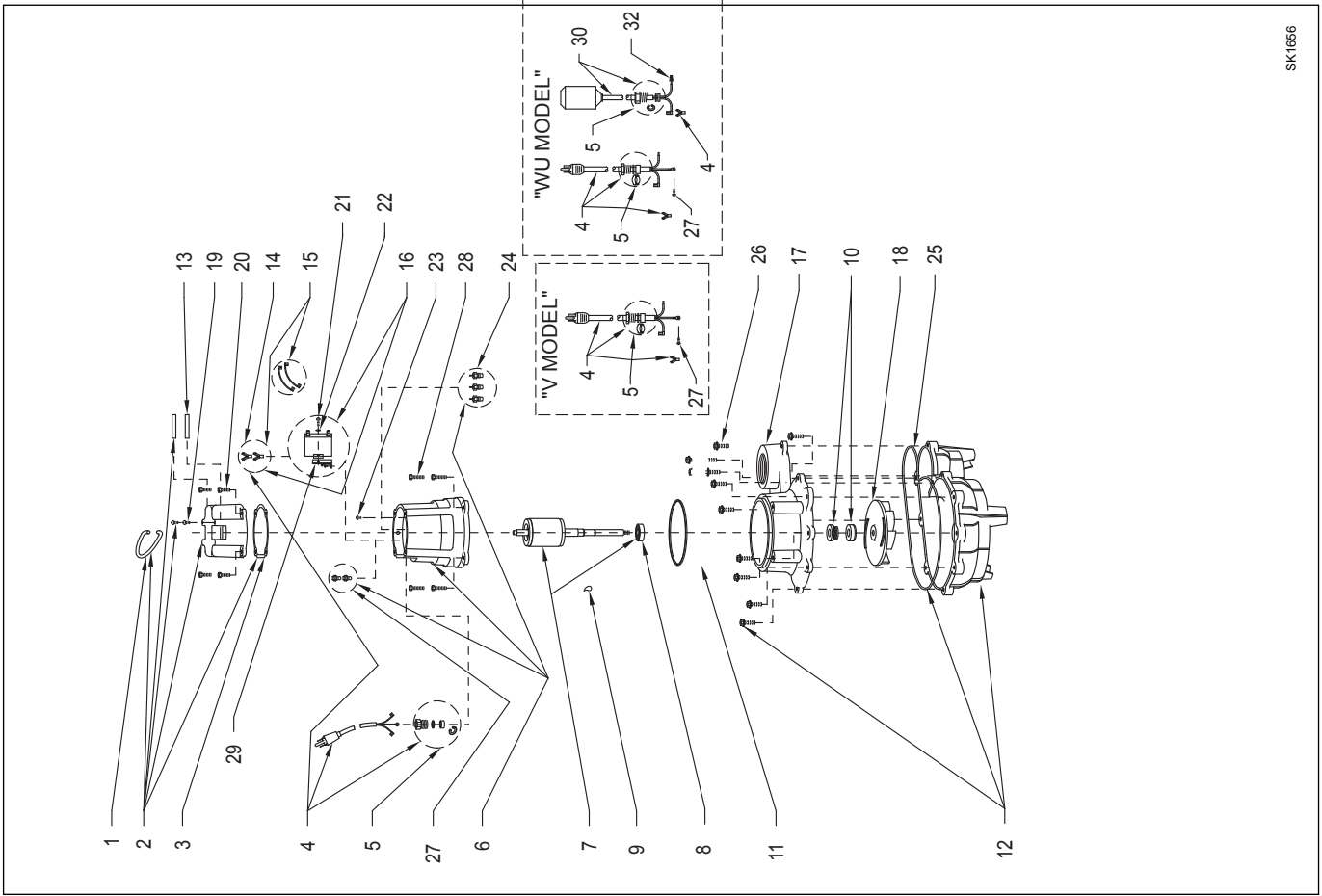
- 1) See FMO160 parts price sheet for listing of parts pricing.
- 2) "NA" indicates not applicable.
- 3) If an "X" follows model number or date of manufacture on brass I.D. tag, consult factory for ordering of this part.
- 4) The capacitor assembly on "REV. A" pumps only (Item 16), includes the case assembly (Item 2) which the customer must also replace.
- 5) When ordering motor housing (Item 6) or rotor and bearing (Item 7), specify either source or ZT motor. ZT stator can be identified by a completely round stator.

REPLACEMENT PARTS ILLUSTRATION FOR MODELS "N4270" AND "E4270"



SK1539

REPLACEMENT PARTS ILLUSTRATION FOR MODELS "N270" AND "E270"



SK1656