

HYMAX[®]

Repair the past. Connect the future.

HYMAX[®] VERSA[™] Coupling and Repair Solutions



HYMAX VERSA. VERSATILE STAINLESS STEEL COUPLING.

HYMAX^{*} VERSA products provide a highly versatile stainless steel coupling solution for connecting and repairing a wide range of water and wastewater pipes. This product line is differentiated for its exceptional durability and flexibility especially in harsh environments such as hot soil conditions.

HYMAX VERSA can join pipes and repair holes and cracks. This multi-functionality, together with unique, extra-wide working range, enables smaller inventories, saving cost and shelf space.



^{*} This product is protected under a registered patent. See Krausz website for details.



JOIN



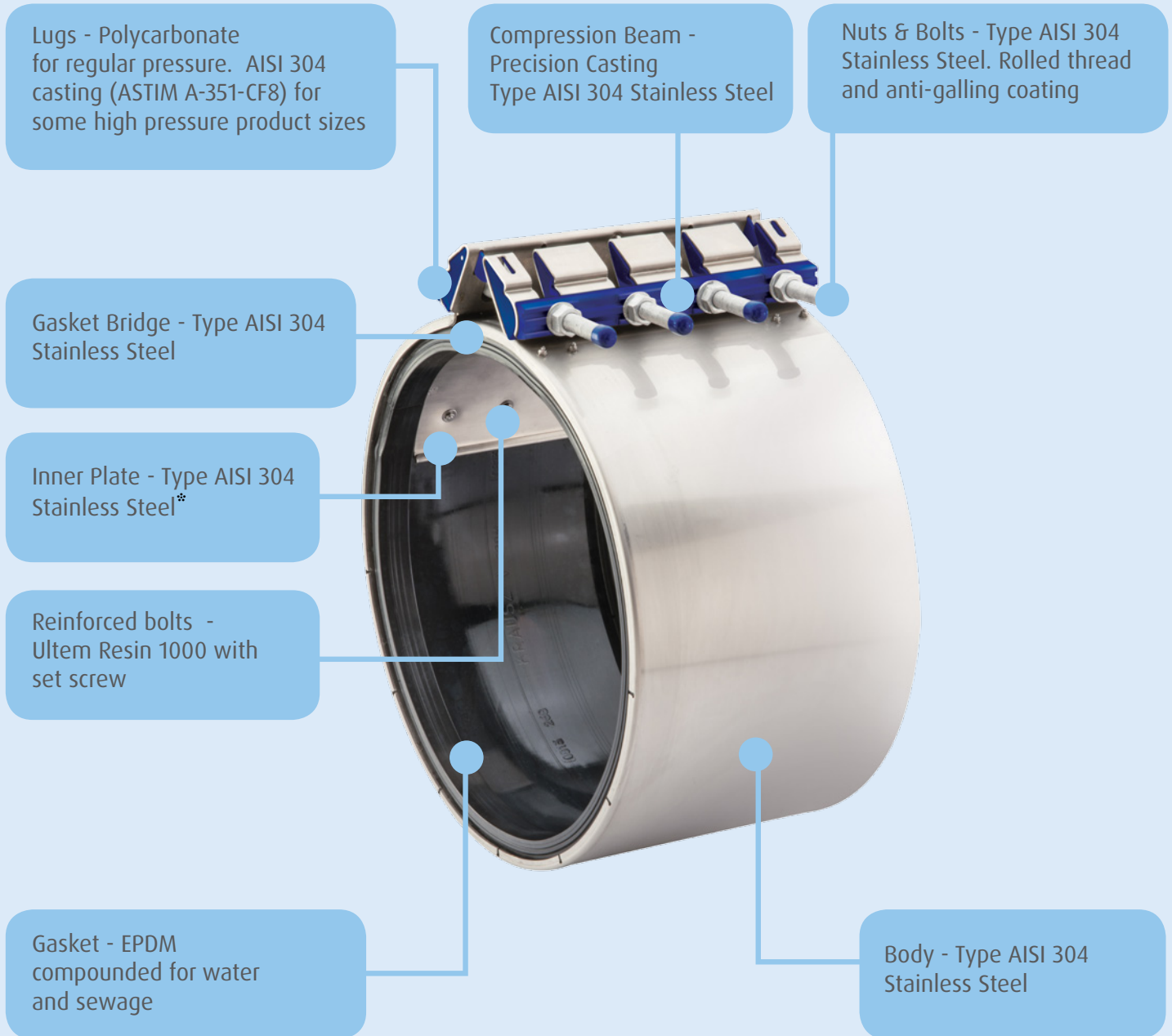
REPAIR



RESTRAIN

 **KRAUSZ** is the creator of HYMAX

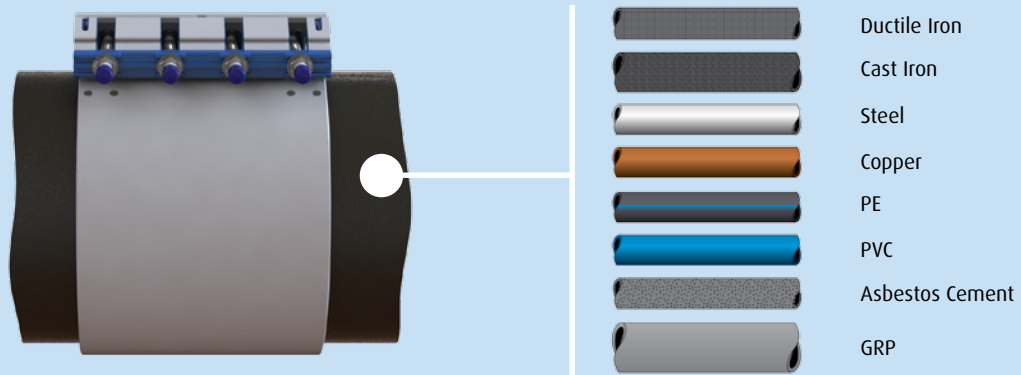
THE HYMAX[®]



Picture is based on HYMAX VERSA 1.5" - 12" - features may vary between different product sizes.

* Coated with Rilsan Nylon for sewage applications.

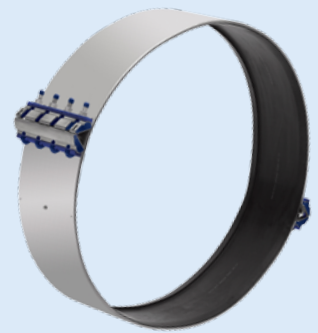
VERSA™ FAMILY



Nominal Pipe Size
1.5" - 12"



Nominal Pipe Size
14" - 24"



Nominal Pipe Size
26" - 70"
(Made to Order)

HYMAX VERSA 1.5" - 3", Length 5.5"

Krausz Part Number	ND (inch)	Overall Range (inch)	Working Pressure (PSI)	Rated Pressure (PSI)
111-56-0045-16	1.5	1.77 - 2.24	232	350
111-56-0052-16	2	2.05 - 2.52	232	350
111-56-0059-16	2	2.32 - 2.79	232	350
111-56-0071-16	2.5	2.79 - 3.31	232	350
111-56-0081-16	3	3.19 - 3.67	232	350

HYMAX VERSA 1.5" - 3", Length 11"

Krausz Part Number	ND (inch)	Overall Range (inch)	Working Pressure (PSI)	Rated Pressure (PSI)
113-56-0045-16	1.5	1.77 - 2.24	232	350
113-56-0052-16	2	2.05 - 2.52	232	350
113-56-0059-16	2	2.32 - 2.79	232	350
113-56-0071-16	2.5	2.79 - 3.31	232	350
113-56-0081-16	3	3.19 - 3.67	232	350

HYMAX VERSA 3" - 5", Length 11"

Krausz Part Number	ND (inch)	Overall Range (inch)	Working Pressure (PSI)	Rated Pressure (PSI)
283-56-0087-16	3	3.42 - 4.3	232	350
283-56-0108-16	4	4.25 - 5.15	232	350
283-56-0113-16	4	4.44 - 5.35	232	350
283-56-0121-16	4	4.76 - 5.67	232	350
283-56-0138-16	5	5.43 - 6.3	232	350
283-56-0147-16	5	5.78 - 6.65	232	350

PRODUCT SPECIFICATIONS

PRESSURE

HYMAX VERSA 6" - 12", Length 11"

Krausz Part Number	ND (inch)	Overall Range (inch)	Before Removing the Inner Layer (inch)	After Removing the Inner Layer (inch)	Working Pressure (PSI)	Rated Pressure (PSI)
283-56-0163-12	6	6.42 - 7.68	6.42 - 7.12	7.01 - 7.68	175	262
283-56-0190-12	7	7.48 - 8.74	7.48 - 8.11	8.07 - 8.74	175	262
283-56-0217-12	8	8.54 - 9.84	8.54 - 9.3	9.13 - 9.84	175	262
283-56-0248-12	10	9.76 - 11.02	9.76 - 10.39	10.35 - 11.02	175	262
283-56-0272-12	10	10.7 - 12	10.7 - 11.37	11.33 - 12	175	262
283-56-0278-12	10	10.96 - 12.26	10.96 - 11.63	11.59 - 12.26	175	262
283-56-0320-12	12	12.58 - 13.84	12.58 - 13.21	13.15 - 13.84	175	262
283-56-0334-12	12	13.15 - 14.41	13.15 - 13.78	13.74 - 14.41	175	262

HYMAX VERSA 14" - 24", Length 11"

Krausz Part Number	ND (inch)	Overall Range (inch)	Before Removing the Inner Layer (inch)	After Removing the Inner Layer (inch)	Working Pressure (PSI)	Rated Pressure (PSI)
283-56-0387-12	14	15.22 - 16.48	15.22 - 15.85	15.84 - 16.48	175	262
283-56-0398-12	14	15.69 - 16.95	15.69 - 16.32	16.31 - 16.95	175	262
283-56-0435-12	16	17.11 - 18.37	17.11 - 17.74	17.73 - 18.37	175	262
283-56-0440-12	16	17.32 - 18.66	17.32 - 17.95	17.90 - 18.66	175	262
283-56-0481-12	16	18.93 - 20.20	18.93 - 19.56	19.55 - 20.20	175	262
283-56-0493-12	18	19.42 - 20.68	19.42 - 20.06	20.05 - 20.68	175	262
283-56-0531-12	18	20.90 - 22.16	20.90 - 21.53	21.52 - 22.16	175	262
283-56-0562-12	20	22.14 - 23.40	22.14 - 22.77	22.76 - 23.40	175	262
283-56-0599-12	20	23.60 - 24.86	23.60 - 24.24	24.22 - 24.86	175	262
283-56-0634-11	24	24.98 - 26.24	24.98 - 25.61	25.60 - 26.24	160	240
283-56-0653-11	24	25.72 - 26.98	25.72 - 26.37	26.35 - 26.98	160	240
283-56-0688-11	24	27.08 - 28.36	27.08 - 27.71	27.70 - 28.36	160	240

Nominal Pipe Size 26" - 70" are MTO (Made to Order)

HYMAX VERSA 1.5" - 3" High Pressure, Length 5.5"

Krausz Part Number	ND (inch)	Overall Range (inch)	Working Pressure (PSI)	Rated Pressure (PSI)
111-56-0045-24	1.5	1.77 - 2.24	348	522
111-56-0052-24	2	2.05 - 2.52	348	522
111-56-0059-24	2	2.32 - 2.79	348	522
111-56-0071-24	2.5	2.79 - 3.31	348	522
111-56-0081-24	3	3.19 - 3.67	348	522

HYMAX VERSA 1.5" - 3" High Pressure, Length 11"

Krausz Part Number	ND (inch)	Overall Range (inch)	Working Pressure (PSI)	Rated Pressure (PSI)
113-56-0045-24	1.5	1.77 - 2.24	348	522
113-56-0052-24	2	2.05 - 2.52	348	522
113-56-0059-24	2	2.32 - 2.79	348	522
113-56-0071-24	2.5	2.79 - 3.31	348	522
113-56-0081-24	3	3.19 - 3.67	348	522

HYMAX VERSA 3" - 5" High Pressure, Length 11"

Krausz Part Number	ND (inch)	Overall Range (inch)	Working Pressure (PSI)	Rated Pressure (PSI)
283-56-0087-24	3	3.42 - 4.3	348	522
283-56-0108-24	4	4.25 - 5.15	348	522
283-56-0113-24	4	4.44 - 5.35	348	522
283-56-0121-24	4	4.76 - 5.67	348	522
283-56-0138-24	5	5.43 - 6.3	348	522
283-56-0147-24	5	5.78 - 6.65	348	522

PRODUCT SPECIFICATIONS

PRESSURE

HYMAX VERSA 6" - 12" High Pressure, Length 11"

Krausz Part Number	ND (inch)	Overall Range (inch)	Before Removing the Inner Layer (inch)	After Removing the Inner Layer (inch)	Working Pressure (PSI)	Rated Pressure (PSI)
283-56-0163-16	6	6.42 - 7.68	6.42 - 7.12	7.01 - 7.68	232	350
283-56-0190-16	7	7.48 - 8.74	7.48 - 8.11	8.07 - 8.74	232	350
283-56-0217-16	8	8.54 - 9.84	8.54 - 9.3	9.13 - 9.84	232	350
283-56-0248-16	10	9.76 - 11.02	9.76 - 10.39	10.35 - 11.02	232	350
283-56-0272-16	10	10.7 - 12	10.7 - 11.37	11.33 - 12	232	350
283-56-0278-16	10	10.96 - 12.26	10.96 - 11.63	11.59 - 12.26	232	350
283-56-0320-16	12	12.58 - 13.84	12.58 - 13.21	13.15 - 13.84	232	350
283-56-0334-16	12	13.15 - 14.41	13.15 - 13.78	13.74 - 14.41	232	350

HYMAX VERSA 14" - 24" High Pressure, Length 11"

Krausz Part Number	ND (inch)	Overall Range (inch)	Before Removing the Inner Layer (inch)	After Removing the Inner Layer (inch)	Working Pressure (PSI)	Rated Pressure (PSI)
283-56-0387-16S	14	15.22 - 16.48	15.22 - 15.85	15.84 - 16.48	232	350
283-56-0398-16S	14	15.69 - 16.95	15.69 - 16.32	16.31 - 16.95	232	350
283-56-0435-16S	16	17.11 - 18.37	17.11 - 17.74	17.73 - 18.37	232	350
283-56-0440-16S	16	17.32 - 18.66	17.32 - 17.95	17.90 - 18.66	232	350
283-56-0481-16S	16	18.93 - 20.20	18.93 - 19.56	19.55 - 20.20	232	350
283-56-0493-16S	18	19.42 - 20.68	19.42 - 20.06	20.05 - 20.68	232	350
283-56-0531-16S	18	20.90 - 22.16	20.90 - 21.53	21.52 - 22.16	232	350
283-56-0562-16S	20	22.14 - 23.40	22.14 - 22.77	22.76 - 23.40	232	350
283-56-0599-16S	20	23.60 - 24.86	23.60 - 24.24	24.22 - 24.86	232	350
283-56-0634-16S	24	24.98 - 26.24	24.98 - 25.61	25.60 - 26.24	232	350
283-56-0653-16S	24	25.72 - 26.98	25.72 - 26.37	26.35 - 26.98	232	350
283-56-0688-16S	24	27.08 - 28.36	27.08 - 27.71	27.70 - 28.36	232	350

Nominal Pipe Size 26" - 70" are MTO (Made to Order)

THE HYMAX[®] VERSA[™]



Highly versatile solution

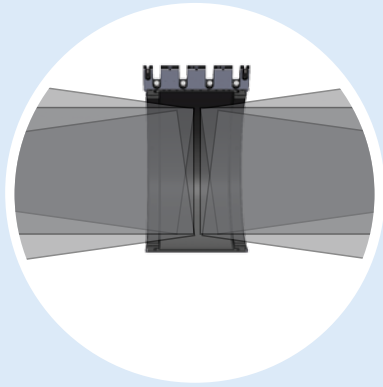
- Multi-purpose stainless steel coupling that can be used for either joining or repairing pipes, reducing and simplifying inventory.
- Excellent coupling solution for hot soils.
- Extensive portfolio of products with 1.5" - 70" nominal pipe sizes.
- Substantially reduces inventory costs and saves shelf space as products cover a wide range of pipe diameters, eliminating the need for dedicated wrap-around and coupling products.
- Mobile utility service teams can address most emergency needs while keeping only a small number of products on hand, reducing unplanned supply runs to and from the warehouse.
- One single product can connect pipes of two different materials, allowing transition capability of up to 0.4".



Exceptionally durable

- Stainless steel coupling with weld-free construction.
- High-quality sealing solution – patented hydraulically-assisted gasket features two-stage sealing: mechanical sealing that is effective under vacuum or non-pressure; and self-inflated gasket using water pressure.
- Perfect solution for hot soil conditions.
- Innovative radial closing design and sealing systems eliminate installation errors.
- One piece design delivers fortified strength and enhanced flexibility.

FAMILY FEATURES



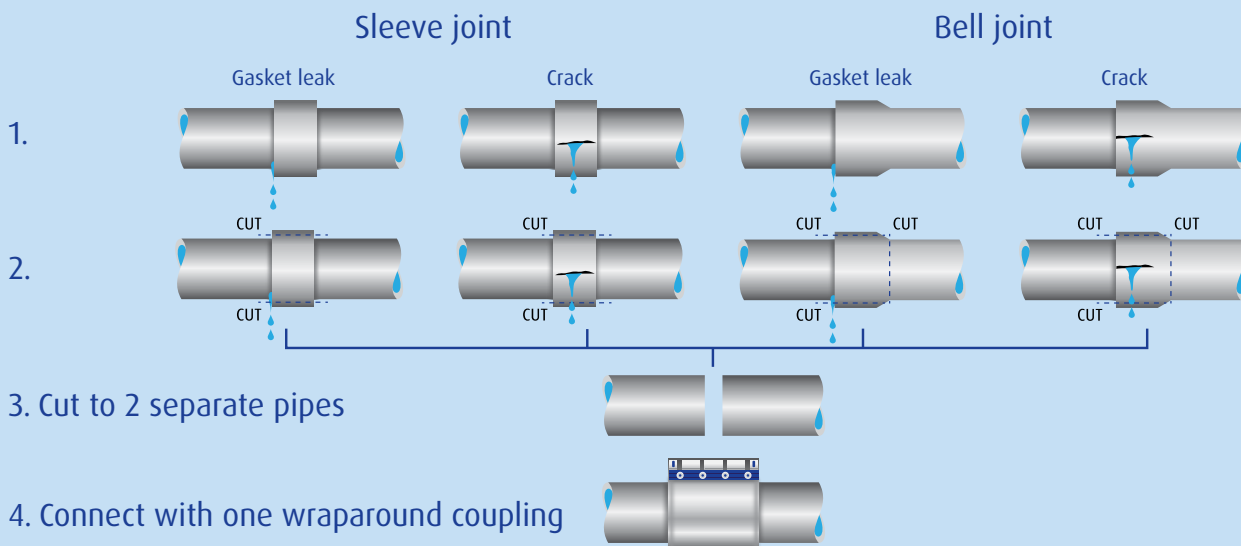
Flexible connection

- During installation, allows for up to 3° angular deflection on each end, as well as for misaligned pipes.
- Absorbs post-installation dynamic pipe deflection of up to 3° on each end, reducing the risk of damage and cracking due to ground shifts and temperature changes.
- Adapts to out-of-round pipe shape (up to 0.31"), for optimum fit on both ends.

The HYMAX VERSA is the ideal solution for the following applications

- Hot soil conditions
- High pressure configurations
- Conventional section replacement for high pressure sewage pipes
- Misaligned pipes
- Shear breaks
- Sleeve joint replacement
- Bell joint replacement

Only 1 HYMAX® VERSA product is needed to repair the leaking joint!





HYMAX® VERSA Product information

1. HYMAX VERSA meets or exceeds standards AWWA C-219, AWWA C-227, NSF-61 and NSF-372.
2. Body: AISI 304 Stainless Steel.
3. Pressure Assisted Gasket: EPDM compounded for water and sewage meets international standards for contact with drinking water NSF-61 and NSF-372.
4. Gasket bridge: AISI 304 Stainless Steel.
5. Inner plate: AISI 304 Stainless Steel connected with reinforced insulated bolts made of Ultem resin 1000 with insert socket set screw AISI 316.
6. Compression beam: AISI 304 Casting (ASTM-A351-CF8).
7. Lugs: - Polycarbonate
- AISI 304 Casting (ASTM A-351-CF8) for some high pressure product sizes.
8. Nuts & Bolts: AISI 304 Stainless Steel. Rolled thread and anti galling coating.
9. Dynamic deflection: 3° per side.
10. Transition capability: up to 0.4".
11. Working pressure:
Regular working pressure products:
1.5" - 5": 232 PSI
6" - 20": 175 PSI
24": 160 PSI
High working pressure products:
1.5" - 5": 348 PSI
6" - 24": 232 PSI
26" - 70": For both regular and high working pressure information, please contact your local Territory Sales Representative. Refer to our website for contact information www.krauszusa.com
12. Rated pressure: 1.5 x Working Pressure.
13. Min. Pipe insertion: For details see product specification sheets.

* Data may vary according to product type and size. For product specification sheets please refer to our website: www.krauszusa.com

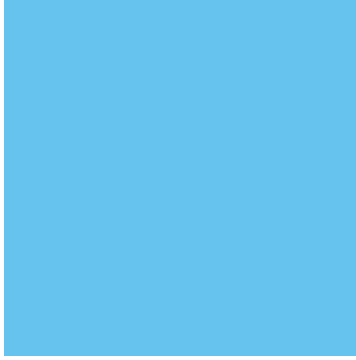
90 YEARS OF INNOVATIVE PIPE JOIN AND REPAIR SOLUTIONS



For 90 years, Krausz, the creator of HYMAX has developed and manufactured market-leading products for the repair and connection of different pipe types in the potable water and sewerage markets.

We have a solid reputation selling a wide variety of innovative, easy-to-use, durable products that save time and reduce inventory.





KRAUSZ USA
331 SW 57TH AVENUE, OCALA,
FLORIDA 34474
TEL: 855-457-2879 OR 855-4KRAUSZ
FAX: 352-304-5787

INFO@KRAUSZUSA.COM
WWW.KRAUSZUSA.COM



KRAUSZ is the creator of Hymax