

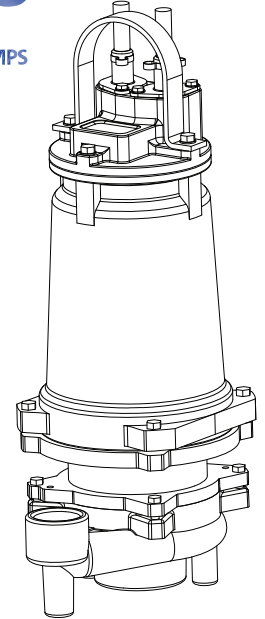
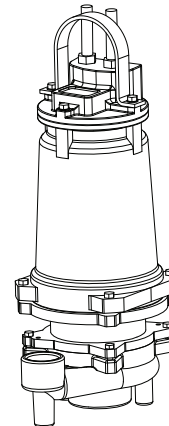
Submersible Grinder Pumps

Specifications:

DISCHARGE	2" NPT, Vertical
LIQUID TEMPERATURE	104°F (40°C) Continuous
VOLUTE	Cast Iron ASTM A-48, Class 30.
MOTOR HOUSING	Cast Iron ASTM A-48, Class 30.
SEAL PLATE	Cast Iron ASTM A-48, Class 30.
IMPELLER: Design	12 Vane, Vortex, With Pump Out Vanes On Back Side. Dynamically Balanced, ISO G6.3.
Material	Cast Iron
SHREDDING RING	Hardened 440C Stainless Steel Rockwell® C-55.
CUTTER	Hardened 440C Stainless Steel, Rockwell® C-55.
SHAFT	416 Stainless Steel
SQUARE RINGS	Buna-N
HARDWARE	300 Series Stainless Steel
PAINT	Air Dry Enamel.
SEAL: Design	Tandem Mechanical, Oil Filled Reservoir.
Material	Rotating Faces - Carbon Stationary Faces - Ceramic Elastomer - Buna-N Hardware -300 Series Stainless
CORD ENTRY:	
SGV5002L & SGV5022L	30 ft. (9m) Std. Cord. Pressure Grommet for Sealing and Strain Relief.
All Other Models	30 ft. (9m) Std. Cord. Custom Molded Quick Connect for For Sealing and Strain Relief
CORD	CSA/UL Approved 10/4, 6/4, 8/4 Type SOW.
UPPER BEARING:	
Design	Single Row, Ball, Oil Lubricated
Load	Radial
INTERMEDIATE BEARING:	
Design	Single Row, Ball, Oil Lubricated
Load	Radial & Thrust
LOWER BEARING:	
Design	Sleeve, Oil Lubrication:
Load	Radial
MOTOR: Design	NEMA L-Single Phase, NEMA B-Three Phase Torque Curve. Oil-Filled, Squirrel Cage Induction.
Insulation	Class F.
SINGLE PHASE	Capacitor Start/Capacitor Run. Requires Overload Protection to be Included In control panel, Requires Barnes® Starter or Control Panel which Includes Capacitors, or Capacitor pack.
THREE PHASE	Dual Voltage 240/480; Requires Overload Protection to be Included in control panel.
OPTIONAL EQUIPMENT	Seal Material, Impeller Trims, Cord Length, Moisture Sensors, Moveable Fitting
RECOMMENDED:	
Accessories	Break Away Fitting (BAF) Check Valve Control Panel
Seal Kit PN	085223
Service Kit PN	115771

SGV³

CENTRIFUGAL GRINDER PUMPS



SGV5002L & SGV5022L ONLY

Series: **SGV** **3, 5, 7.5 HP,** **3450RPM, 60Hz**

Sample Specifications: Section 3 Page 9.

DESCRIPTION:

THE GRINDER PUMP IS DESIGNED TO REDUCE DOMESTIC, COMMERCIAL, INSTITUTIONAL AND LIGHT INDUSTRIAL SEWAGE TO A FINELY GROUND SLURRY.

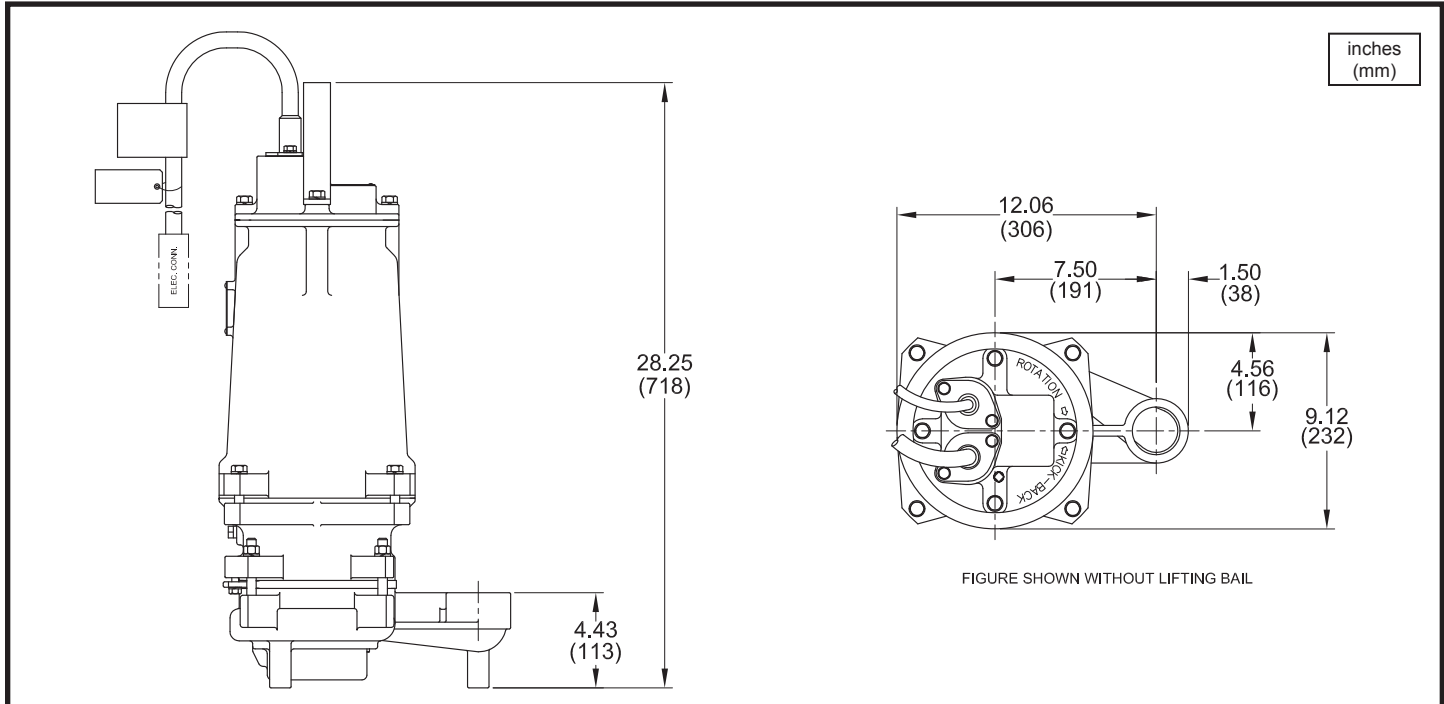


WARNING:

CANCER AND REPRODUCTIVE HARM -
WWW.P65WARNINGS.CA.GOV



Submersible Grinder Pumps



MODEL NO	PART NO	HP	VOLT/PH	Hz	RPM (Nom)	NEMA START CODE	FULL LOAD AMPS	LOCKED ROTOR AMPS	CORD SIZE	CORD TYPE	CORD O.D. ± .02 (.5) in (mm)
SGV3072L	111608	3	200/240/1	60	3450	G	25.2/21.7	86/75	10/4	SOW	.75 (19)
SGV3062L	111612	3	200/3	60	3450	J	17.0	65.0	10/4	SOW	.75 (19)
SGV3032L	111609	3	240/3	60	3450	K	14.5	62.0	10/4	SOW	.75 (19)
SGV3042L	111610	3	480/3	60	3450	K	7.2	31.0	10/4	SOW	.75 (19)
SGV3052L	111611	3	600/3	60	3450	J	5.6	22.6	10/4	SOW	.75 (19)
SGV5002L	115657	5	200/1	60	3450	F	42.0	134.0	6/4	SOW	1.03 (26)
SGV5022L	115658	5	240/1	60	3450	H	39.0	136.0	8/4	SOW	.93 (24)
SGV5062L	111619	5	200/3	60	3450	K	25.0	122.0	10/4	SOW	.75 (19)
SGV5032L	111616	5	240/3	60	3450	L	21.9	120.0	10/4	SOW	.75 (19)
SGV5042L	111617	5	480/3	60	3450	L	11.0	60.0	10/4	SOW	.75 (19)
SGV5052L	111618	5	600/3	60	3450	L	8.8	46.0	10/4	SOW	.75 (19)
SGV7532L	111613	7.5	240/3	60	3450	M	22.3	136.0	10/4	SOW	.75 (19)
SGV7542L	111614	7.5	480/3	60	3450	M	11.2	68.0	10/4	SOW	.75 (19)
SGV7552L	111615	7.5	600/3	60	3450	M	10.8	76.0	10/4	SOW	.75 (19)

Temperature sensor cord for SGV5002L & SGV5022L is 14/2 SOW, 0.55 (14mm) ± .02 (.51mm) O.D.

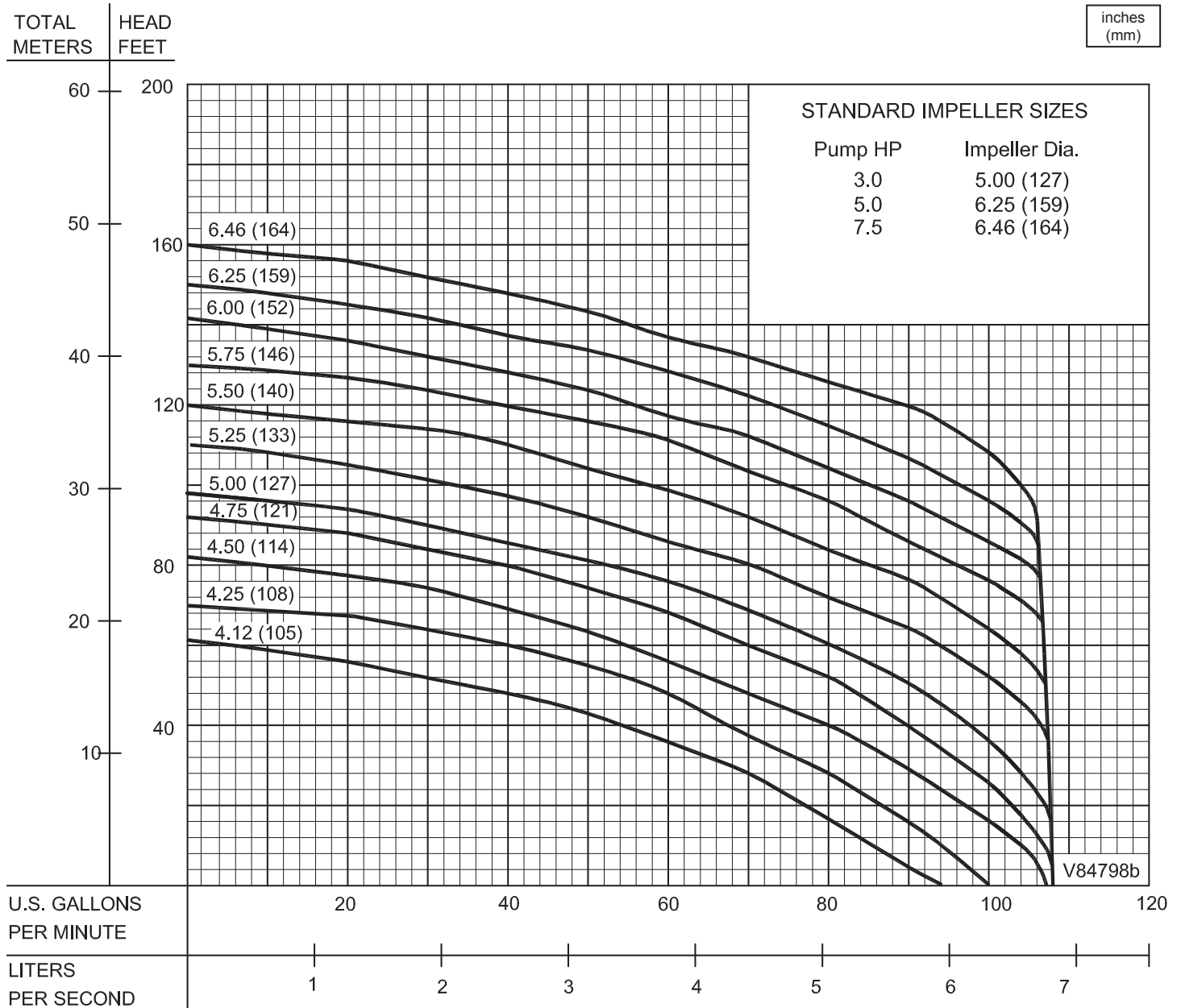
Temperature sensor cord for all other models is 14/3 SOW, 0.55 (14mm) ± .02 (.51mm) O.D.

Optional - Moisture and Temperature sensor cord for all models is 18/5 SOW, 0.47 (12mm) ± .02 (.51mm) O.D., replaces Temperature sensor cord.

IMPORTANT !

- 1.) PUMP MAY BE OPERATED "DRY" FOR EXTENDED PERIODS WITHOUT DAMAGE TO MOTOR AND/OR SEALS.
- 2.) INSTALLATIONS SUCH AS DECORATIVE FOUNTAINS OR WATER FEATURES PROVIDED FOR VISUAL ENJOYMENT MUST BE INSTALLED IN ACCORDANCE WITH THE NATIONAL ELECTRIC CODE ANSI/NFPA 70 AND/OR THE AUTHORITY HAVING JURISDICTION. THIS PUMP IS NOT INTENDED FOR USE IN SWIMMING POOLS, RECREATIONAL WATER PARKS, OR INSTALLATIONS IN WHICH HUMAN CONTACT WITH PUMPED MEDIA IS A COMMON OCCURRENCE.

Submersible Grinder Pumps



Testing is performed with water, specific gravity 1.0 @ 68° F @ (20°C), other fluids may vary performance