

# SELF-PRIMING CENTRIFUGAL TRASH PUMPS

Series: BSPO3LA8D  
Spherical solids handling: 1¼"  
Frame mounted



## SIZE

3" x 3" ANSI, 125 lb. flange.

## LIQUID TEMPERATURE

160°F (71 °C)

## CASING

Cast iron ASTM A-48 class 30.

## IMPELLER

**Design:** 2 vane, open.

**Material:** cast iron ASTM A-48 class 30.

## SHAFT

High carbon steel.

## END COVER PLATE

Cast iron ASTM A-48 class 30, removable, full diameter.

## VOLUTE/WEAR PLATE

Cast iron ASTM A-48 class 30, replaceable with external clearance adjustment.

## SEAL PLATE

Alloy steel no. 4140, replaceable.

## PEDESTAL

Cast iron ASTM A-48 class 30.

## BEARING - PUMP END

Single ball, radial and thrust load, oil lubricated.

## BEARING - DRIVE END

Single ball, radial and thrust load, oil lubricated.

## PEDESTAL AND BEARING LUBRICATION

SAE no. 30 non detergent oil, pedestal includes oil level sight gauges.

## SEAL

**Design:** single, mechanical, grease lubricated by self-feeding lubricator.

**Material:** carbon / ceramic / Buna-N.

## CHECK VALVE

Elbow and weights are cast iron ASTM A-48 class 30, neoprene flap valve.

## SQUARE RINGS

Buna-N.

## HARDWARE

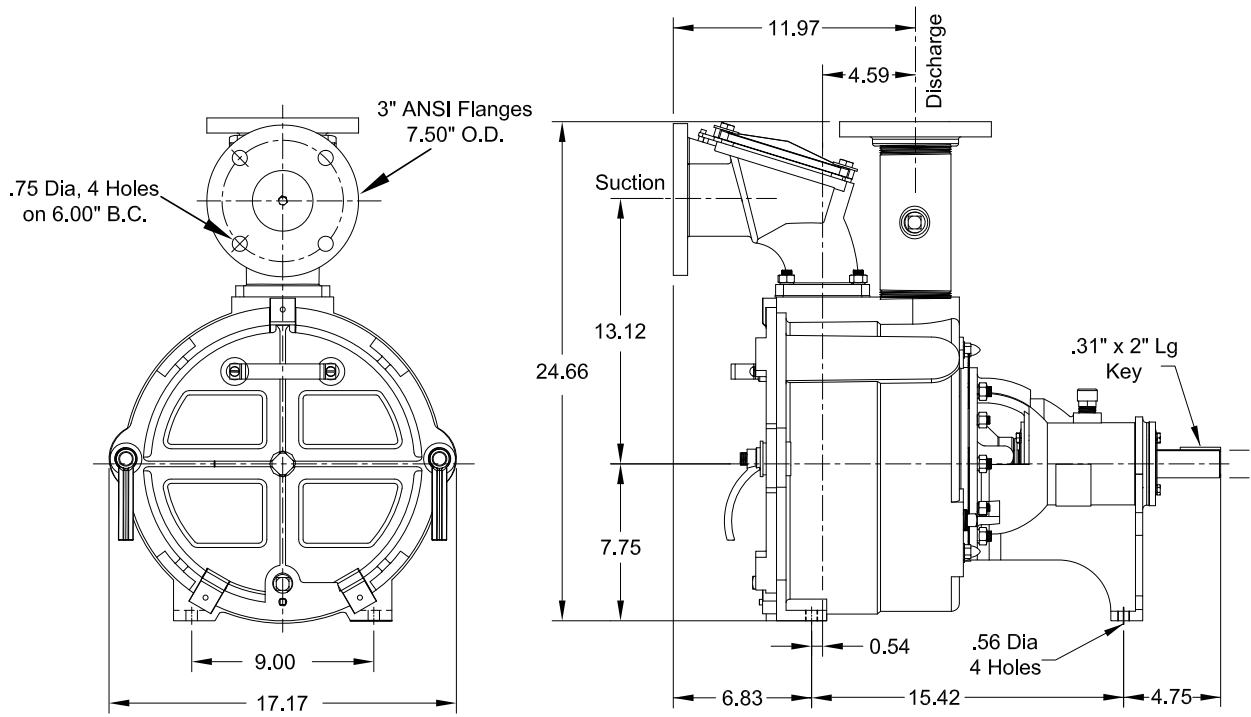
Corrosion resistant steel.

## PAINT

Air dry enamel, water based.

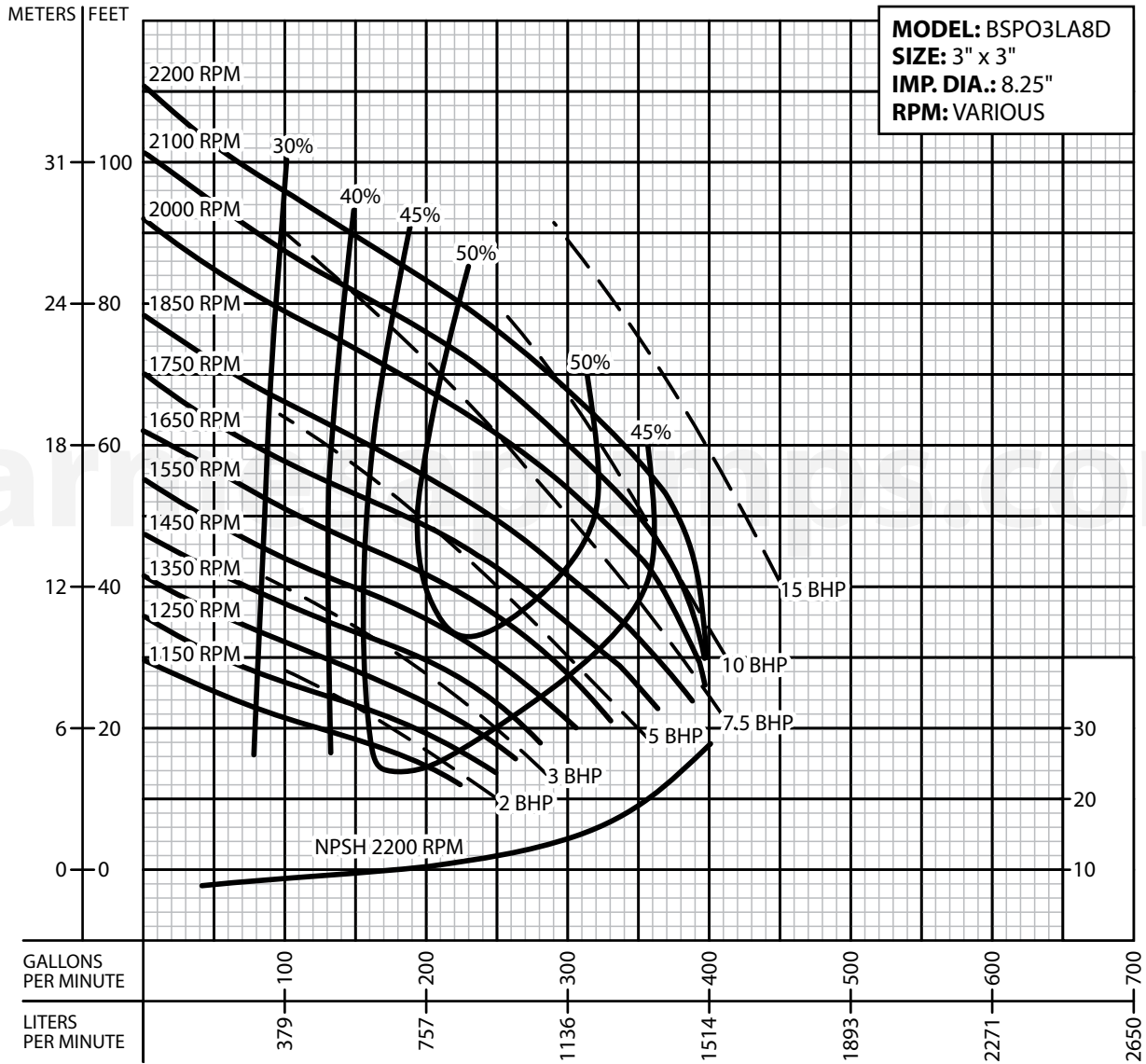
## OPTIONAL EQUIPMENT

Flexible coupled assy, with base OSHA guard and electric motor.



**IMPORTANT! - Do not use in explosive atmosphere or for pumping volatile flammable liquids.**

barmesapumps.com



GRAPHIC SCALE  2 FEET  
5 GPM

Testing is performed with water specific gravity of 1.0 @ 68 °F (20 °C); other fluids may vary performance.