

2" General Purpose AG Dewatering Pumps Cast Iron / Thermoplastic

The A.Y. McDonald line of engine driven dewatering pumps offer economy, durability, portability and performance all in one neat package. Pump construction materials range from cast iron featuring dual volute design that reduces radial load on engine to corrosion resistant thermoplastic components featuring removable/replaceable volutes, impellers and wearplates. A.Y. McDonald Engine Driven Dewatering pumps are reliable, cost effective, and low maintenance.

Application:

Ideal for general purpose dewatering, irrigation, spraying, washdown, and agricultural applications. For use with non-flammable liquids which are compatible with pump component materials.

Features:

- Cast iron or thermoplastic construction
- Briggs & Stratton or Honda engines
- Buna-N mechanical seal
- 2" FNPT port sizes - suction & discharge
- Self-priming up to 20'
- Pumps include carrying handle
- Built-in check valve

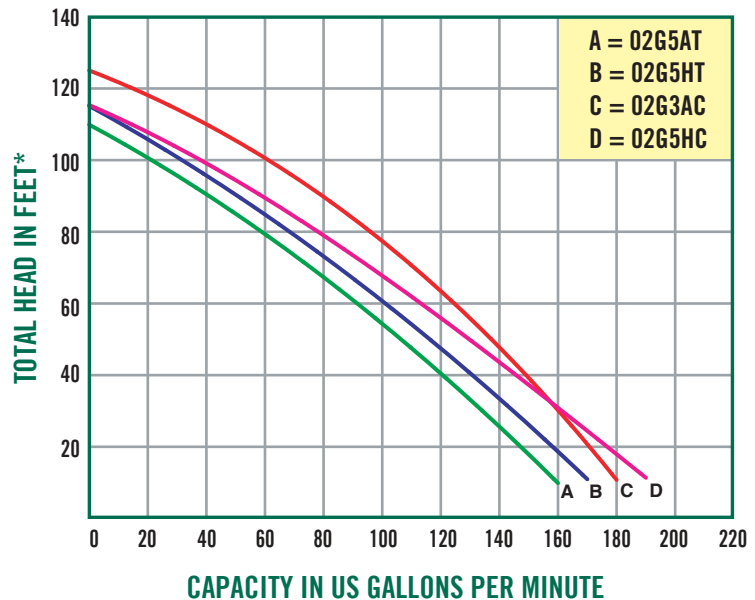


2" Dewatering pump
Cast iron housing



2" Thermoplastic housing

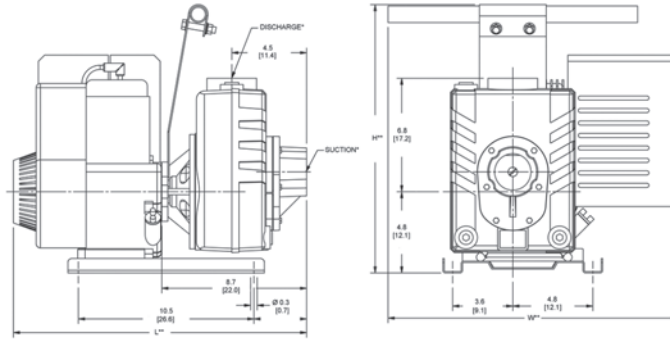
Performance



*CONVERT TO PSI, DIVIDE BY 2.31 | LIQUID WATER SPECIFIC GRAVITY 1.0

2" General Purpose AG Dewatering Pumps

Cast Iron / Thermoplastic

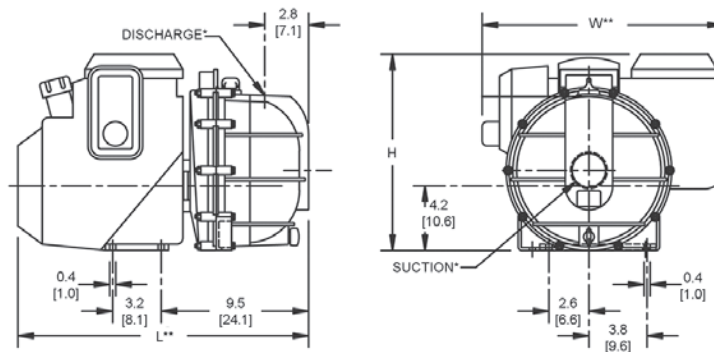


2" Dewater Pumps | Cast Iron

Model	Curve	HP Class*	Motor	Run-Time (Hours)	Tank Size (Gal/Lrt)	Ship Wt. (Lbs.)	L**	W**	H**
02G3AC	B	4	Briggs & Stratton	1.2	0.52/2.0	65	17.8	17.5	16.1
02G5HC	C	5	Honda	1.5	0.47/1.7	70	16.1	19.4	16.1

Features:

- Cast iron construction
- Solids Handling - 3/8" diameter
- Stainless steel shaft sleeve
- Maximum temperature 180°F
- Dual volute design
- Fiber Gasket Casing Seal
- Delivers a maximum of 180 GPM
- Optional Viton® or silicon carbide mechanical seals
- Maximum working pressure 75 PSI



2" Dewater Pumps | Thermoplastic

Model	Curve	HP Class*	Motor	Run-Time (Hours)	Tank Size (Gal/Lrt)	Ship Wt. (Lbs.)	L**	W**	H**
02G5AT	A	4	Briggs & Stratton	1.2	0.52/2.0	40	18.1	13.6	12.6
02G5HT	D	5	Honda	1.5	0.47/1.7	45	18.8	15.6	12.7

Features:

- Thermoplastic construction
- Polypropylene impeller
- Solids Handling - 7/16" diameter
- O-ring casing seal
- Replaceable volute
- Maximum temperature 130°F
- Delivers up to 48 PSI and maximum 190 GPM
- Optional EPDM mechanical seals available
- Maximum working pressure 60 PSI

(*) Standard NPT (female) pipe thread.

(**) This dimension may vary due to motor manufacturer's specifications.

Dimensions are in inches.

† HP class represents market category and is not intended to define actual horsepower.

NOTE: Dimensions have a tolerance of $\pm 1/8"$.

WARNING: Do not use in explosive atmosphere or for pumping volatile flammable liquids.