

Self-Priming Diaphragm Pump

The A.Y. McDonald line of 3" Diaphragm pumps features two stage, forty-four/one gear reduction with a large diameter output gear and heavy duty ball bearing construction. Often referred to as mud pumps or sludge pumps.

A.Y. McDonald Diaphragm pumps are available with a choice of drivers to meet your application requirements: Briggs & Stratton or Honda gasoline engines, Hatz diesel or 115 VAC electric motor with weatherproof cord and switch. Built-in molded polyurethane flapper/check valve assures self-priming to 20 feet after initial prime. Heavy duty gear box is designed to operate pumps at 40 strokes per minute for electric motor and 60 strokes per minute for engine models. Each unit includes a 3" NPT steel suction strainer, two 3" NPT nipples, and a wheel kit with 10" semi-pneumatic transport wheels for portability. **Suction and discharge port size cannot be reduced.**

Application:

Designed to pump mud, slurry, sewage, and thick liquids that have the ability to flow. Pumps are designed for use with non-flammable liquids which are compatible with pump component materials.

Features:

- Sand cast aluminum construction for portability and durability
- Thermoplastic rubber diaphragm
- 3" NPT suction and discharge
- 1 5/8" diameter solids handling capability
- Modular component design permits easy maintenance and cleanout
- Driver options: gasoline engine or electric motor
- Delivers up to 90 GPM
- Maximum temperature 180°F
- Suction strainer included
- Model 03D1.5V - 1.5 HP single phase, 115/230 Volt motor with manual reset overload includes 20 foot 115 VAC power cord and weatherproof on/off switch

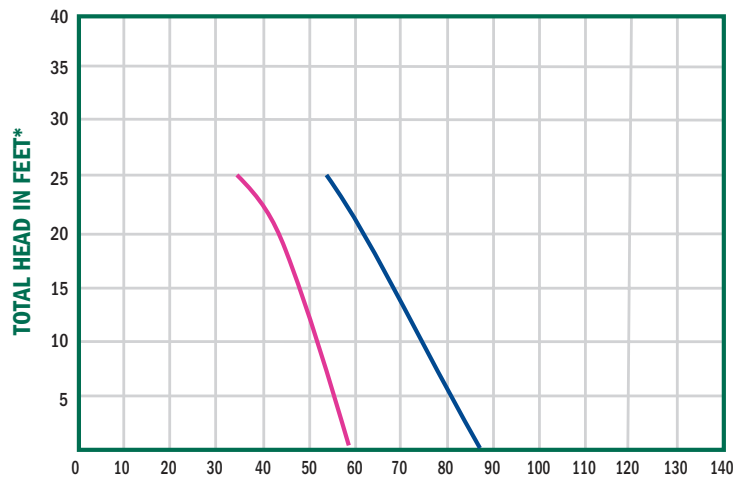


Model 03D5A

Handle not shown

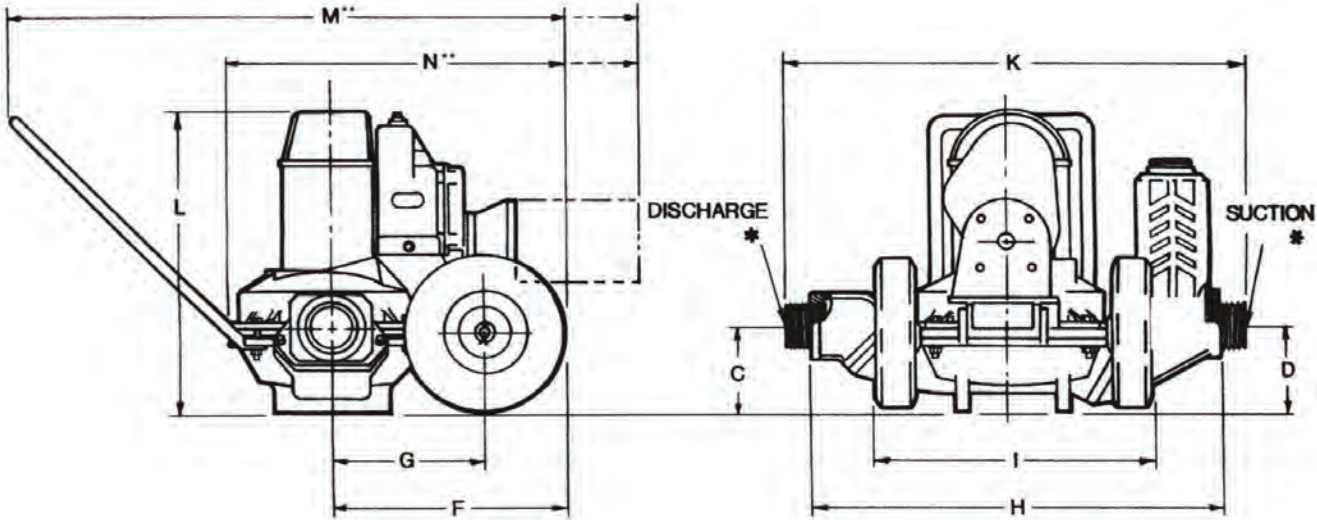


Performance



CAPACITY IN US GALLONS PER MINUTE @ 3450 RPM
*CONVERT TO PSI, DIVIDE BY 2.31 | LIQUID WATER SPECIFIC GRAVITY 1.0

Self-Priming Diaphragm Pump



Dewatering Pumps

Dimensions

Model#	Driver	C	D	F	G	H	I	K	L	M**	N**	Suct.	Disch.	Shipping Wt. (lbs.)
03D1.5V	1.5 HP Electric Motor	6.2	6.3	14.5	9.5	26.5	17.9	30.0	22.0	43.5	27.5	3"	3"	186
03D5A	5.5 HP Briggs & Stratton CP550	6.2	6.3	14.5	9.5	26.5	17.9	30.0	22.0	41.5	25.5	3"	3"	181
03D5H	5.5 HP Honda GX160	6.2	6.3	14.5	9.5	26.5	17.9	30.0	22.0	41.5	25.5	3"	3"	182
03D5Z	4.8 HP Hatz diesel L20	6.2	6.3	14.5	9.5	26.5	17.9	30.0	22.0	43.0	27.0	3"	3"	203

(*) Standard NPT (female) pipe thread.
 (**) This dimension may vary due to motor manufacturer's specifications.
 NOTE: Dimensions have a tolerance of $\pm 1/8"$.

90° Rotatable Base on All Models

