

# 3L4, 3L5, 4L1A,B, 5L2, 6L3

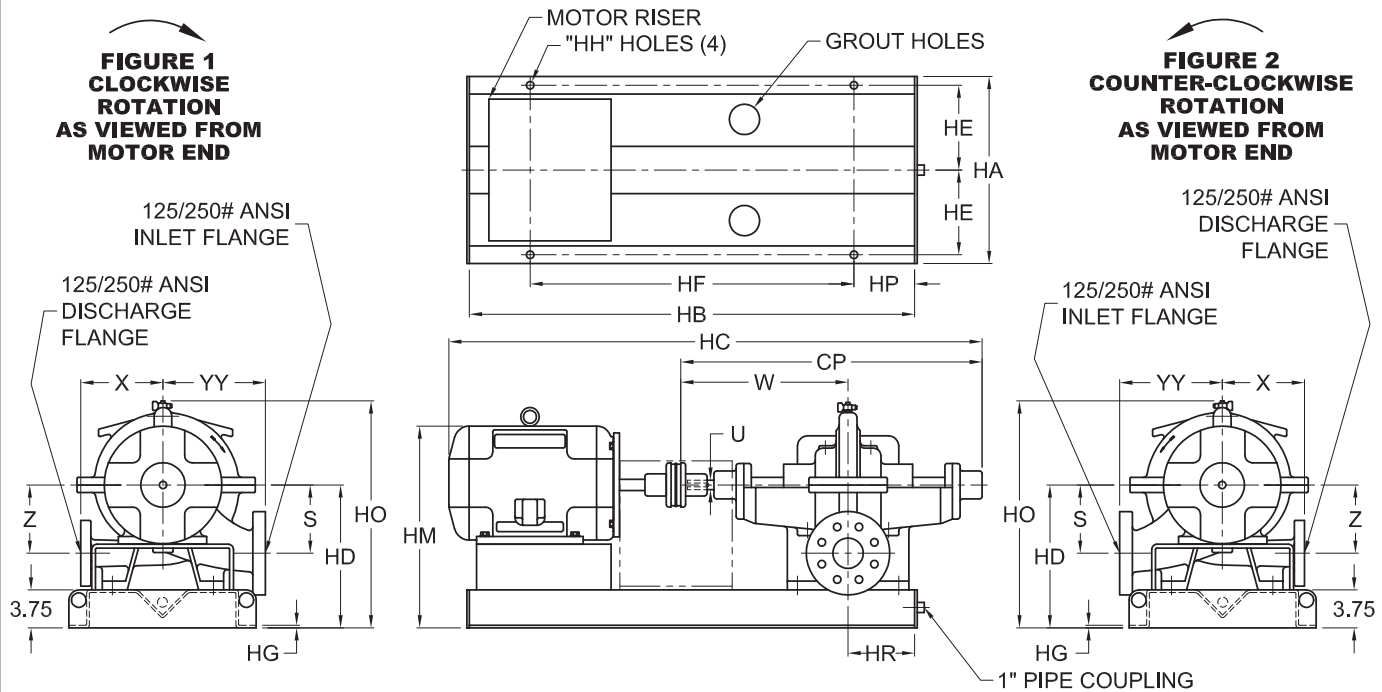
Double Suction  
Standard (Inches)



www.cranepumps.com

## Split Case Pumps - Horizontally Mounted

PUMP NO.	PUMP: TDH: GPM: ROTATION: FIGURE NO:	MOTOR: HP: RPM: PHASE: ENCLOSURE:	VOLTS:  HZ: FRAME:
FOR:	DATE:		
CERT. BY:			



**NOT FOR CONSTRUCTION, INSTALLATION OR APPLICATION PURPOSES UNLESS OTHERWISE CERTIFIED**

**NOTES:**

1. ALL DIMENSIONS ± .13 EXCEPT WHERE NOTED.
2. ALL GAUGE TAPPINGS TO BE 1/4" N.P.T.
3. DIMENSIONS MAY VARY. HC & HM DIMENSIONS SHOWN BASED ON U.S. ELECTRIC STANDARD EFFICIENCY ODP MOTOR.
4. MOTOR MAY EXTEND OVER BASE.
5. DIMENSIONS SHOWN ARE FOR A STANDARD "DRIP TROUGH" BASE. CONSULT FACTORY FOR "DRIP PAN" BASE DIMENSIONS.

**DIMENSIONS IN INCHES**

PUMP	DISCH. (INCH)	INLET (INCH)	CP	HD	HO	S	U	W	X	YY	Z
3L4	3	4	29.50	14.50	23.75	6.13	1.13	16.25	9.25	10.00	6.13
3L5	3	4	29.50	14.50	26.00	6.25	1.13	16.25	10.50	12.00	8.25
4L1A,B	4	5	29.50	14.50	26.50	7.00	1.13	16.25	12.00	14.00	7.88
5L2	5	6	29.50	14.50	26.00	6.75	1.13	16.25	12.00	14.00	7.63
6L3	6	8	29.50	14.50	25.25	6.88	1.13	16.25	12.50	15.00	6.88

**DIMENSIONS IN INCHES**

MOTOR FRAME	HA	HB	HC	HE	HF	HG	HH	HM	HP	HR	MOTOR FRAME	HA	HB	HC	HE	HF	HG	HH	HM	HP	HR	
182T	20.50	52.00	45.25	9.38	40.00	.25	.75	18.50	6.00	7.75	324TS	20.50	52.00	55.75	9.38	40.00	.25	.75	22.00	6.00	7.62	
184T	20.50	52.00	45.25	9.38	40.00	.25	.75	18.50	6.00	7.75	326TS	20.50	52.00	55.75	9.38	40.00	.25	.75	22.00	6.00	7.62	
213T	20.50	52.00	46.50	9.38	40.00	.25	.75	19.38	6.00	7.62	364T	20.50	52.00	59.25	9.38	40.00	.25	.75	23.63	6.00	7.62	
215T	20.50	52.00	48.00	9.38	40.00	.25	.75	19.38	6.00	7.62	365T	20.50	52.00	60.25	9.38	40.00	.25	.75	23.63	6.00	7.62	
254T	20.50	52.00	52.75	9.38	40.00	.25	.75	20.25	6.00	7.75	364TS	20.50	52.00	56.75	9.38	40.00	.25	.75	23.63	6.00	7.62	
256T	20.50	52.00	53.25	9.38	40.00	.25	.75	20.25	6.00	7.75	365TS	20.50	52.00	57.75	9.38	40.00	.25	.75	23.63	6.00	7.62	
284T	20.50	52.00	55.75	9.38	40.00	.25	.75	21.13	6.00	7.62												
286T	20.50	52.00	55.75	9.38	40.00	.25	.75	21.13	6.00	7.62												
284TS	20.50	52.00	54.00	9.38	40.00	.25	.75	21.13	6.00	7.62												
286TS	20.50	52.00	54.00	9.38	40.00	.25	.75	21.13	6.00	7.62												
324T	20.50	52.00	57.50	9.38	40.00	.25	.75	22.00	6.00	7.62												
326T	20.50	52.00	57.50	9.38	40.00	.25	.75	22.00	6.00	7.62												

SECTION 1200  
PAGE 26  
DATE 2/15



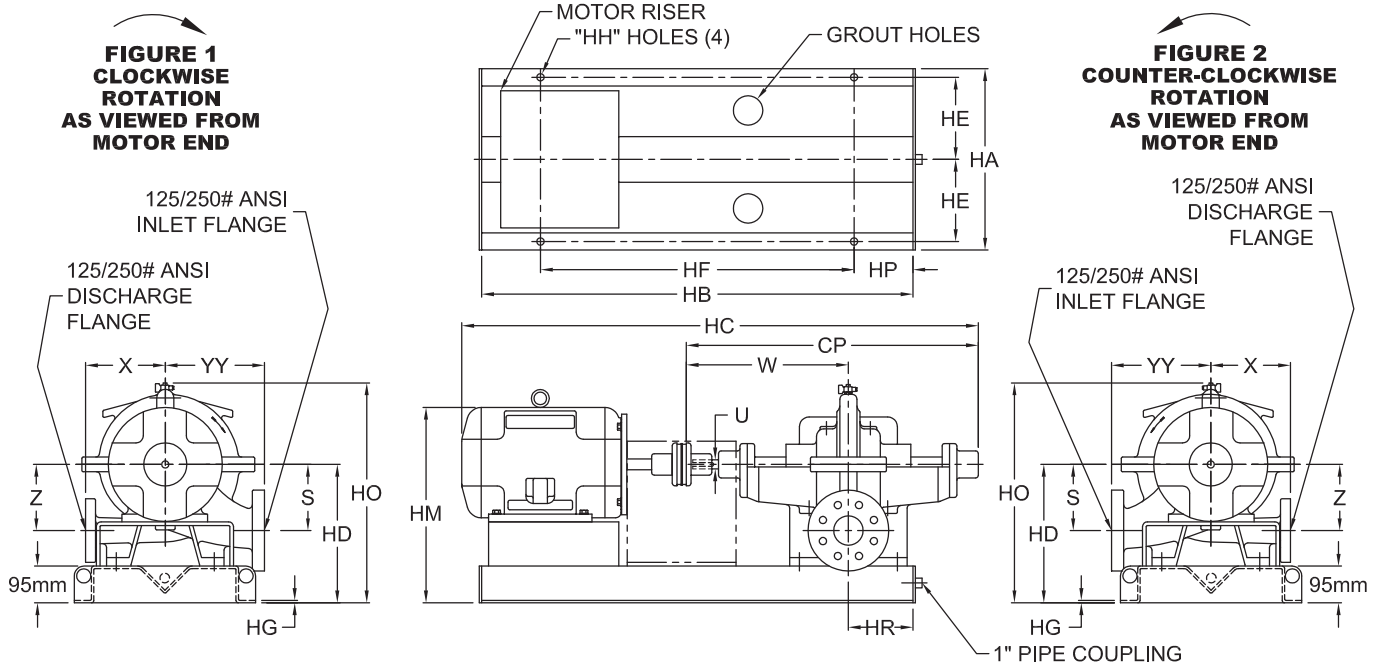
A Crane Co. Company

## PUMPS & SYSTEMS

USA: (937) 778-8947 • Canada: (905) 457-6223 • International: (937) 615-3598

### Split Case Pumps - Horizontally Mounted

<b>PUMP NO.</b>	<b>PUMP:</b>	<b>MOTOR:</b>	<b>VOLTS:</b>
<b>FOR:</b>	<b>TDH:</b>	<b>HP:</b>	<b>HZ:</b>
<b>CERT. BY:</b>	<b>ROTATION:</b>	<b>RPM:</b>	<b>FRAME:</b>
<b>DATE:</b>	<b>FIGURE NO:</b>	<b>PHASE:</b>	
		<b>ENCLOSURE:</b>	



**NOT FOR CONSTRUCTION, INSTALLATION OR APPLICATION PURPOSES UNLESS OTHERWISE CERTIFIED**

**NOTES:**

1. ALL DIMENSIONS ± 3mm EXCEPT WHERE NOTED.
2. ALL GAUGE TAPPINGS TO BE 1/4" N.P.T.
3. DIMENSIONS MAY VARY. HC & HM DIMENSIONS SHOWN BASED ON U.S. ELECTRIC STANDARD EFFICIENCY ODP MOTOR.
4. MOTOR MAY EXTEND OVER BASE.
5. DIMENSIONS SHOWN ARE FOR STANDARD "DRIP TROUGH" BASE. CONSULT FACTORY FOR "DRIP PAN" BASE DIMENSIONS.

**DIMENSIONS IN MILLIMETERS (Except where noted)**

PUMP	DISCH. (INCH)	INLET (INCH)	CP	HD	HO	S	U	W	X	YY	Z
3L4	3	4	749	368	603	156	29	413	235	254	156
3L5	3	4	749	368	660	159	29	413	267	305	210
4L1A,B	4	5	749	368	673	178	29	413	305	356	200
5L2	5	6	749	368	660	171	29	413	305	356	194
6L3	6	8	749	368	641	175	29	413	318	381	175

**DIMENSIONS IN MILLIMETERS (Except where noted)**

MOTOR FRAME	HA	HB	HC	HE	HF	HG	HH	HM	HP	HR	MOTOR FRAME	HA	HB	HC	HE	HF	HG	HH	HM	HP	HR
182T	521	1321	1149	238	1016	6	19	470	152	197	324TS	521	1321	1416	238	1016	6	19	559	152	194
184T	521	1321	1149	238	1016	6	19	470	152	197	326TS	521	1321	1416	238	1016	6	19	559	152	194
213T	521	1321	1181	238	1016	6	19	492	152	194	364T	521	1321	1505	238	1016	6	19	600	152	194
215T	521	1321	1219	238	1016	6	19	492	152	194	365T	521	1321	1530	238	1016	6	19	600	152	194
254T	521	1321	1340	238	1016	6	19	514	152	197	364TS	521	1321	1441	238	1016	6	19	600	152	194
256T	521	1321	1353	238	1016	6	19	514	152	197	365TS	521	1321	1467	238	1016	6	19	600	152	194
284T	521	1321	1416	238	1016	6	19	537	152	194											
286T	521	1321	1416	238	1016	6	19	537	152	194											
284TS	521	1321	1372	238	1016	6	19	537	152	194											
286TS	521	1321	1372	238	1016	6	19	537	152	194											
324T	521	1321	1461	238	1016	6	19	559	152	194											
326T	521	1321	1461	238	1016	6	19	559	152	194											

# 3L4, 3L5, 4L1A,B, 5L2, 6L3

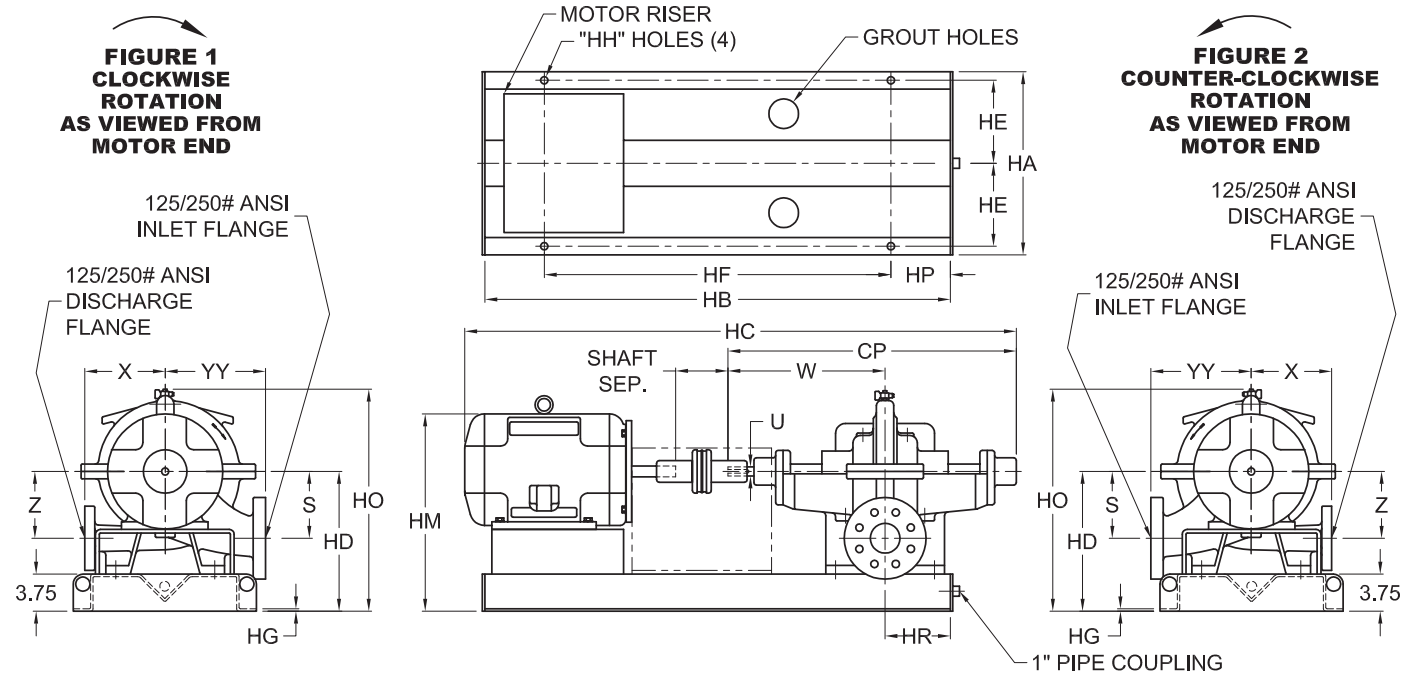
Double Suction - Spacer Coupling  
Standard (Inches)



www.cranepumps.com

## Split Case Pumps - Horizontally Mounted

PUMP NO.	PUMP: TDH: GPM: ROTATION: FIGURE NO:	MOTOR: HP: RPM: PHASE: ENCLOSURE:	VOLTS:  HZ: FRAME:
FOR:			
CERT. BY:	DATE:		



**NOT FOR CONSTRUCTION, INSTALLATION OR APPLICATION PURPOSES UNLESS OTHERWISE CERTIFIED**

**NOTES:**

1. ALL DIMENSIONS ±.13 EXCEPT WHERE NOTED.
2. ALL GAUGE TAPPINGS TO BE 1/4" N.P.T.
3. DIMENSIONS MAY VARY. HC & HM DIMENSIONS SHOWN BASED ON U.S. ELECTRIC STANDARD EFFICIENCY ODP MOTOR.
4. MOTOR MAY EXTEND OVER BASE.
5. DIMENSIONS SHOWN ARE FOR STANDARD "DRIP TROUGH" BASE. CONSULT FACTORY FOR "DRIP PAN" BASE DIMENSIONS.

**DIMENSIONS IN INCHES**

PUMP	DISCH. (INCH)	INLET (INCH)	CP	HD	HO	S	U	W	X	YY	Z
3L4	3	4	29.50	14.50	23.75	6.13	1.13	16.25	9.25	10.00	6.13
3L5	3	4	29.50	14.50	26.00	6.25	1.13	16.25	10.50	12.00	8.25
4L1A,B	4	5	29.50	14.50	26.50	7.00	1.13	16.25	12.00	14.00	7.88
5L2	5	6	29.50	14.50	26.00	6.75	1.13	16.25	12.00	14.00	7.63
6L3	6	8	29.50	14.50	25.25	6.88	1.13	16.25	12.50	15.00	6.88

**DIMENSIONS IN INCHES**

MOTOR FRAME	HA	HB	HC	HE	HF	HG	HH	HM	HP	HR	SHAFT SEP	MOTOR FRAME	HA	HB	HC	HE	HF	HG	HH	HM	HP	HR	SHAFT SEP
182T	20.50	52.00	48.25	9.38	40.00	.25	.75	18.50	6.00	7.75	3.75	324TS	20.50	52.00	60.50	9.38	40.00	.25	.75	22.00	6.00	7.62	5.25
184T	20.50	52.00	48.25	9.38	40.00	.25	.75	18.50	6.00	7.75	3.75	326TS	20.50	52.00	60.50	9.38	40.00	.25	.75	22.00	6.00	7.62	5.25
213T	20.50	52.00	50.75	9.38	40.00	.25	.75	19.38	6.00	7.62	5.25	364TS	20.50	52.00	61.50	9.38	40.00	.25	.75	23.63	6.00	7.62	5.25
215T	20.50	52.00	52.25	9.38	40.00	.25	.75	19.38	6.00	7.62	5.25												
254T	20.50	52.00	57.50	9.38	40.00	.25	.75	20.25	6.00	7.75	5.25												
256T	20.50	52.00	58.00	9.38	40.00	.25	.75	20.25	6.00	7.75	5.25												
284T	20.50	52.00	59.75	9.38	40.00	.25	.75	21.13	6.00	7.75	5.25												
286T	20.50	52.00	59.75	9.38	40.00	.25	.75	21.13	6.00	7.75	5.25												
284TS	20.50	52.00	58.25	9.38	40.00	.25	.75	21.13	6.00	7.62	5.25												
286TS	20.50	52.00	58.25	9.38	40.00	.25	.75	21.13	6.00	7.62	5.25												
324T	22.50	60.00	62.00	10.38	48.00	.38	.75	22.00	6.00	7.62	5.25												
326T	22.50	60.00	62.00	10.38	48.00	.38	.75	22.00	6.00	7.62	5.25												

SECTION 1200  
PAGE 28  
DATE 2/15



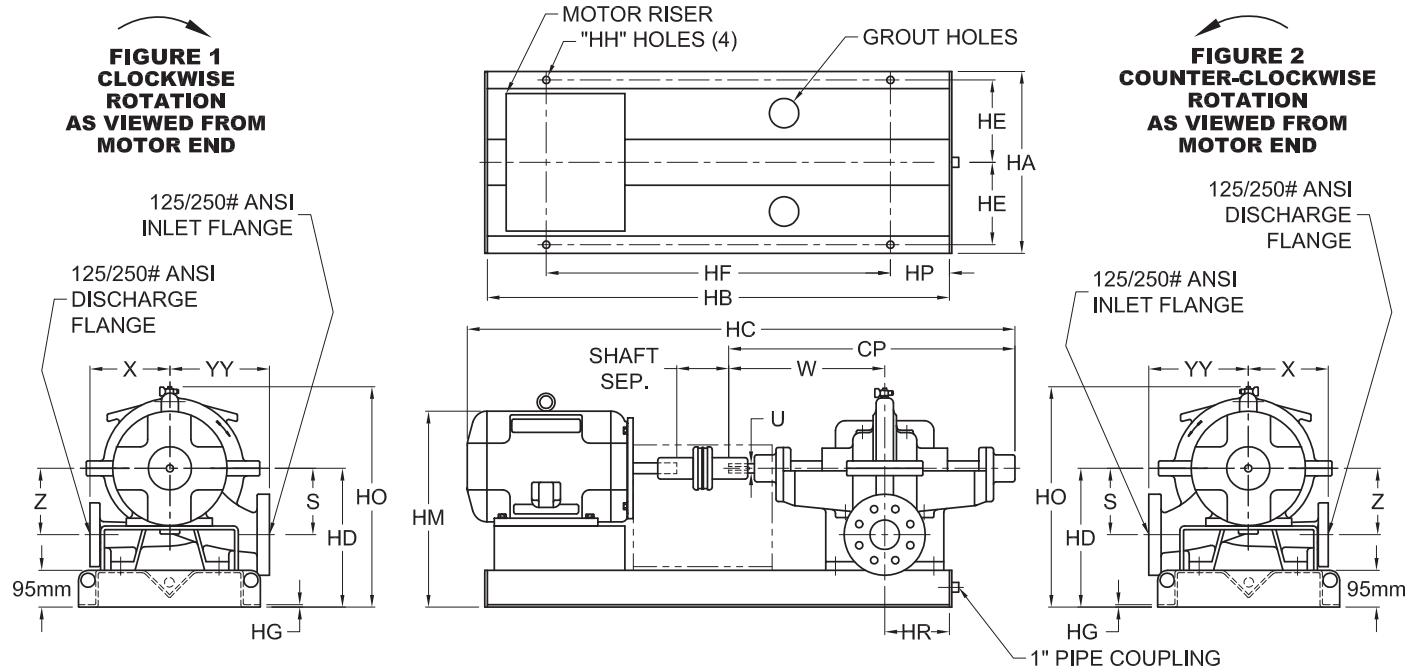
## PUMPS & SYSTEMS

A Crane Co. Company

USA: (937) 778-8947 • Canada: (905) 457-6223 • International: (937) 615-3598

### Split Case Pumps - Horizontally Mounted

<b>PUMP NO.</b>	<b>PUMP:</b>	<b>MOTOR:</b>	<b>VOLTS:</b>
<b>FOR:</b>	<b>TDH:</b>	<b>HP:</b>	<b>HZ:</b>
<b>CERT. BY:</b>	<b>GPM:</b>	<b>RPM:</b>	<b>FRAME:</b>
<b>DATE:</b>	<b>ROTATION:</b>	<b>PHASE:</b>	
	<b>FIGURE NO:</b>	<b>ENCLOSURE:</b>	



**NOT FOR CONSTRUCTION, INSTALLATION OR APPLICATION PURPOSES UNLESS OTHERWISE CERTIFIED**

**NOTES:**

1. ALL DIMENSIONS ± 3mm EXCEPT WHERE NOTED.
2. ALL GAUGE TAPPINGS TO BE 1/4" N.P.T.
3. DIMENSIONS MAY VARY. HC & HM DIMENSIONS SHOWN BASED ON U.S. ELECTRIC STANDARD EFFICIENCY ODP MOTOR.
4. MOTOR MAY EXTEND OVER BASE.
5. DIMENSIONS SHOWN ARE FOR STANDARD "DRIP TROUGH" BASE. CONSULT FACTORY FOR "DRIP PAN" BASE DIMENSIONS.

**DIMENSIONS IN MILLIMETERS (Except where noted)**

PUMP	DISCH. (INCH)	INLET (INCH)	CP	HD	HO	S	U	W	X	YY	Z
3L4	3	4	749	356	603	156	29	413	235	254	156
3L5	3	4	749	356	660	159	29	413	267	305	210
4L1A,B	4	5	749	356	673	178	29	413	305	356	200
5L2	5	6	749	356	660	171	29	413	305	356	194
6L3	6	8	749	356	641	175	29	413	318	381	175

**DIMENSIONS IN MILLIMETERS (Except where noted)**

MOTOR FRAME	HA	HB	HC	HE	HF	HG	HH	HM	HP	HR	SHAFT SEP	MOTOR FRAME	HA	HB	HC	HE	HF	HG	HH	HM	HP	HR	SHAFT SEP
182T	521	1321	1226	238	1016	6	19	470	152	197	95	324TS	521	1321	1537	238	1016	6	19	559	152	194	133
184T	521	1321	1226	238	1016	6	19	470	152	197	95	326TS	521	1321	1537	238	1016	6	19	559	152	194	133
213T	521	1321	1289	238	1016	6	19	492	152	194	133	364TS	521	1321	1562	238	1016	6	19	600	152	194	133
215T	521	1321	1327	238	1016	6	19	492	152	194	133												
254T	521	1321	1461	238	1016	6	19	514	152	197	133												
256T	521	1321	1473	238	1016	6	19	514	152	197	133												
284T	521	1321	1518	238	1016	6	19	537	152	197	133												
286T	521	1321	1518	238	1016	6	19	537	152	197	133												
284TS	521	1321	1480	238	1016	6	19	537	152	194	133												
286TS	521	1321	1480	238	1016	6	19	537	152	194	133												
324T	572	1524	1575	264	1219	10	19	559	152	194	133												
326T	572	1524	1575	264	1219	10	19	559	152	194	133												