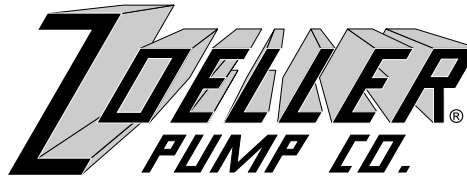


*"QUALITY PUMPS SINCE 1939"*

Product information presented here reflects conditions at time of publication. Consult factory regarding discrepancies or inconsistencies.



SECTION: 6.10.355

FM1488

0803

Supersedes

0701

MAIL TO: P.O. BOX 16347 • Louisville, KY 40256-0347  
SHIP TO: 3649 Cane Run Road • Louisville, KY 40211-1961  
(502) 778-2731 • 1 (800) 928-PUMP • FAX (502) 774-3624

visit our web site:  
<http://www.zoeller.com>

## REPLACEMENT PARTS LIST FOR MODELS:

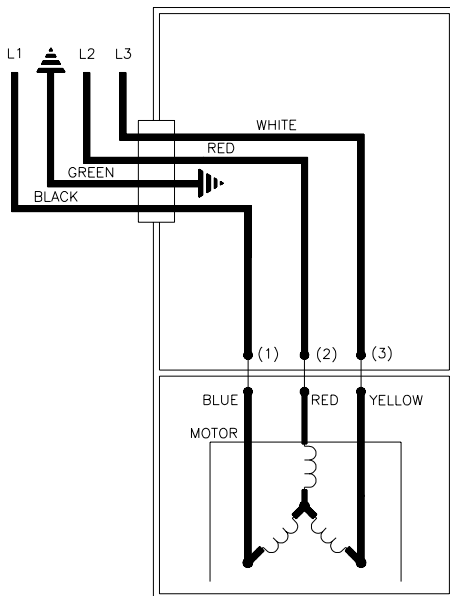
E4290 NONAUTOMATIC/DOUBLE SEAL 230V/1PH  
I4290 NONAUTOMATIC/DOUBLE SEAL 200V/1PH  
F4290 NONAUTOMATIC/DOUBLE SEAL 230V/3PH  
G4290 NONAUTOMATIC/DOUBLE SEAL 460V/3PH  
J4290 NONAUTOMATIC/DOUBLE SEAL 200V/3PH  
BA4290 NONAUTOMATIC/DOUBLE SEAL 575V/3PH

Consult factory for all other models

### TO ORDER REPLACEMENT PARTS:

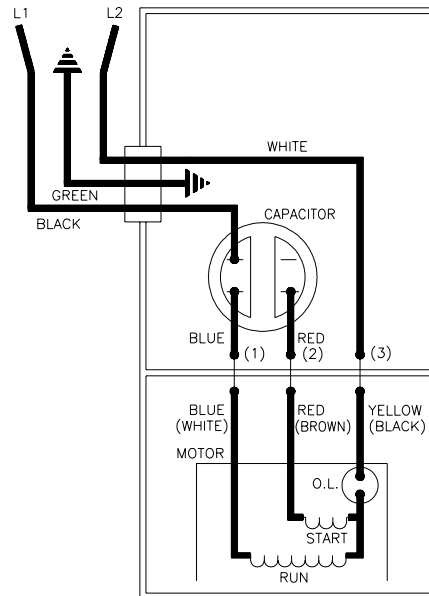
PLEASE FURNISH THE FOLLOWING INFORMATION:

- Model Number.
- Part Number of Pump.
- Part Number and Description of part.



006848

WIRING DIAGRAM FOR MODELS  
"F4290-A thru B", "G4290-A thru B",  
"J4290-A thru B" & "BA4290-A thru B"  
3/96 thru Current



002397

WIRING DIAGRAM FOR MODELS  
"E4290-A thru B" & "I4290-A thru C"  
3/96 thru Current

**REPLACEMENT PARTS LIST FOR: "E4290" & "I4290".**

MODELS:				E4290-A	E4290-B					I4290-A	I4290-B	I4290-C			
REF. NO.	DESCRIPTION	QTY	NOTES	3/96 thru 7/01	8/01 thru Current					3/96 thru 7/01	8/01 thru 04/03	05/03 thru Current			
1	•Handle	1		217069	217069					217069	217069	217069			
2	Cover & Cordage 16/3	1	5	011063	011063					011068	011068	016106			
3	•Cover-Mach & Handle Asm	1	5	011058	011058					011067	011067	016104			
4	•Gasket, Case/Cover	1		001011	001011					001011	001011	001011			
5	Wire Pkg (2) Wires	1		011062	011062					011062	011062	011062			
6	Capacitor & Clamp Asm 20uF	1		002381	002381					002381	002381	002381			
7	Housing, Mtr-& Stator	1	1,3	002382	002382					005529	005529	005529			
8	Bearing, Sleeve-Bronze	1		001012	001012					001012	001012	001012			
9	Cordage, Terminal & Seal 50'	1	5	011059	011059					011069	011069	016110			
10	•Seal, Cord-Asm & Strain Relief	1	5	011065	011065					004375	004375	015634			
11	•Plug, Test White	3		034090	034090					034090	034090	034090			
12	•Seal, Thru Wall Term.	3		003402	003402					003402	003402	003402			
13	Rotor & Brg. Asm.	1	3	011061	011061					011061	011061	011061			
14	Washer, Seal Locating& Snap Ring	1		011057	011057					011057	011057	011057			
15	Bearing, 7303	1		009861	009861					009861	009861	009861			
16	•Seal, Mtr. Hsg.	2		001014	001014					001014	001014	001014			
17	•Oil, Dielectric-(57 oz can)	1		011066	011066					011066	011066	011066			
18	Adapter-Mach. Upper	1		008862	008862					008862	008862	008862			
19	•Seal, Shaft - Upper	1	6	002430	014675					002430	014675	014675			
20	•Seal, Shaft - Lower	1	7	002430	014642					002430	014642	014642			
20	Adapter-Mach Lower	1		008833	008833					008833	008833	008833			
21	Impeller "4290"	1		011097	011097					011097	011097	011097			
22	Flange Pkg 2"NPT	1		217024	217024					217024	217024	217024			
22	Flange Pkg 3"NPT	1		317024	317024					317024	317024	317024			
23	Housing, Pump-Mach "4290/4291"	1		009349	009349					009349	009349	009349			
24	•Screw, #6-32 x .25RHM SL Tc Stlgr	3		001877	001877					001877	001877	001877			
25	•Screw, .25-20 x .75 HHm-SS	4		001916	001916					001916	001916	001916			
26	•Screw, .25-20 x 1 HHm-SS	4		007790	007790					007790	007790	007790			
27	•Screw, .5-13 x 2 HH Cap-SS	2		001909	001909					001909	001909	001909			
28	•Washer, SS-1.25Od x .562ld x .078	2		002115	002115					002115	002115	002115			
29	•Screw, .313-18 x 1 HH Cap-SS	8		002608	002608					002608	002608	002608			
▫	Rebuild Kit	1		011096	011096					011095	011095	016244			

- Items included in Rebuild Kit.
- Not shown in illustration.

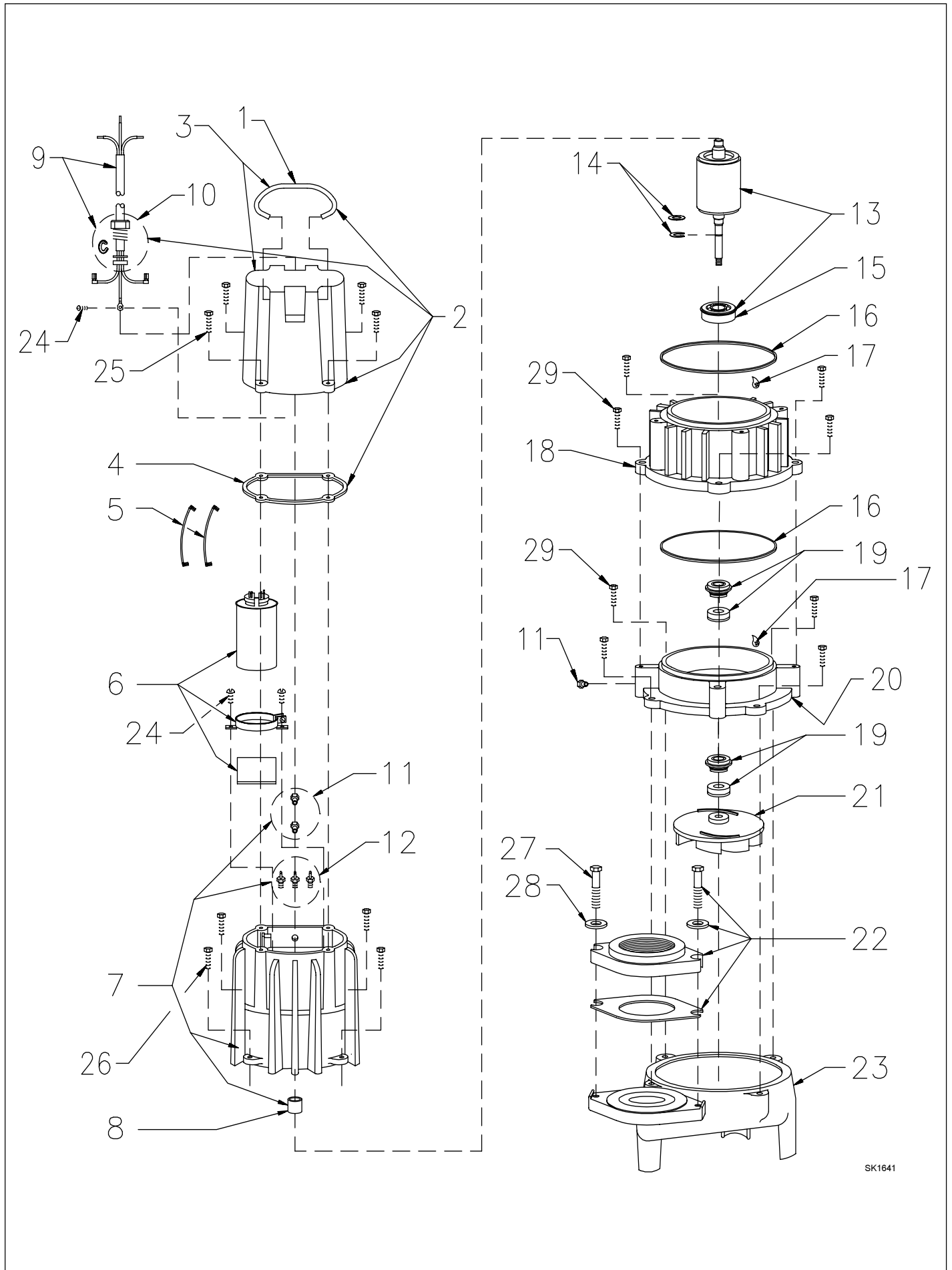
**REPLACEMENT PARTS LIST FOR: "J4290" & "F4290".**

MODELS:				J4290-A	J4290-B					F4290-A	F4290-B				
REF. NO.	DESCRIPTION	QTY	NOTES	3/96 thru 7/01	8/01 thru Current					3/96 thru 7/01	8/01 thru Current				
1	•Handle	1		217069	217069					217069	217069				
2	Cover & Cordage 16/3	1	5	011072	011072					011072	011072				
3	•Cover-Mach & Handle Asm	1	5	011058	011058					011058	011058				
4	•Gasket, Case/Cover	1		001011	001011					001011	001011				
5	Wire Pkg (2) Wires	N/A		N/A	N/A					N/A	N/A				
6	Capacitor & Clamp Asm 20uF	N/A		N/A	N/A					N/A	N/A				
7	Housing, Mtr-& Stator	1	1,3	004443	004443					005472	005472				
8	Bearing, Sleeve-Bronze	1		001012	001012					001012	001012				
9	Cordage, Terminal & Seal 50'	1	5	011070	011070					011070	011070				
10	•Seal, Cord-Asm & Strain Relief	1	5	011071	011071					011071	011071				
11	•Plug, Test White	3		034090	034090					034090	034090				
12	•Seal, Thru Wall Term.	3		003402	003402					003402	003402				
13	Rotor & Brg. Asm.	1	3	012675	012675					012675	012675				
14	Washer, Seal Locating& Snap Ring	1		011057	011057					011057	011057				
15	Bearing, 7303	1		009861	009861					009861	009861				
16	•Seal, Mtr. Hsg.	2		001014	001014					001014	001014				
17	•Oil, Dielectric-(57 oz can)	1		011066	011066					011066	011066				
18	Adapter-Mach. Upper	1		008862	008862					008862	008862				
19	•Seal, Shaft - Upper	1	6	002430	014675					002430	014675				
20	•Seal, Shaft - Lower	1	7	002430	014642					002430	014642				
20	Adapter-Mach Lower	1		008833	008833					008833	008833				
21	Impeller "4290"	1		011074	011074					011074	011074				
22	Flange Pkg 2"NPT	1		217024	217024					217024	217024				
22	Flange Pkg 3"NPT	1		317024	317024					317024	317024				
23	Housing, Pump-Mach "4290/4291"	1		009349	009349					009349	009349				
24	•Screw, #6-32 x .25RHM SL Tc Stlgr	1		001877	001877					001877	001877				
25	•Screw, .25-20 x .75 HHm-SS	4		001916	001916					001916	001916				
26	•Screw, .25-20 x 1 HHm-SS	4		007790	007790					007790	007790				
27	•Screw, .5-13 x 2 HH Cap-SS	2		001909	001909					001909	001909				
28	•Washer, SS-1.25Od x .562ld x .078	2		002115	002115					002115	002115				
29	•Screw, .313-18 x 1 HH Cap-SS	8		002608	002608					002608	002608				
▫	Rebuild Kit	1		011093	011093					011093	011093				

- Items included in Rebuild Kit.
- Not shown in illustration.



REPLACEMENT PARTS ILLUSTRATION FOR ALL 4290 MODELS.



SK1641