

quality . service
innovation . integrity

High Head Agricultural Pumps



Features

The High Head "Agricultural" series of submersible sewage pumps is designed for use in agricultural applications, lagoon recirculation systems, and sump pit systems. The innovative vortex impeller design reduces the risk of clogging and provides great solid passing capability. These durable cast iron pumps include a powder coated epoxy finish to prevent corrosion, and are designed to provide great heat dissipation from the motor, ensuring a long service life. As with every Zoeller pump, each one is 100% pressure-tested, submerged and run to ensure quality and reliability for years of trouble-free performance! This attention to detail is an inherent feature in every pump of this series, making it one of the most reliable in the industry.

- Variable level control systems and containers of various sizes are available for longer cycles.
- Double seal models prevent leaks, seal or bearing damage during dry run conditions as well as improve bearing lubrication.
- Includes a stainless steel handle for easy installation and removal.
- All models are hermetically sealed to be watertight, dust-tight, and completely submersible.

Specifications

Motor Characteristics

Motor	1.4 - 2.8 KW
Voltage	220 or 380 V
Phase	1 or 3 Ph
Hertz	50 Hz
RPM	2800 RPM
Type	Permanent split capacitor or 3 Ph
Insulation	Class B
Amps	2.3 - 14.0 Amps

Pump Characteristics

Operation	Nonautomatic
Discharge Size	2" NPT (optional 3" NPT flange)
Solids Handling	38 mm (1-1/2") spherical solids
Cord Length	15 m (50') standard
Cord Type	SOW/SOOW (CE model H07RN-F)
Max Head	14 m (46')
Max Flow Rate	11.1 m ³ /hr (176 GPM)
Max Operating Temp	54°C (130°F)
Cooling	Oil filled
Motor Protection	Auto reset thermal overload (1Ph)

Materials Characteristics

Cap	Cast iron
Motor Housing	Cast iron
Pump Housing	Cast iron
Base	Cast iron
Upper Bearing	Ball bearing
Lower Bearing	Ball bearing
Mechanical Seals	Silicon carbide/carbon upper, silicon carbide/silicon carbide lower
Impeller Type	Non-clogging vortex
Impeller	Bronze
Hardware	Stainless steel
Motor Shaft	416 stainless steel
Gasket	Neoprene

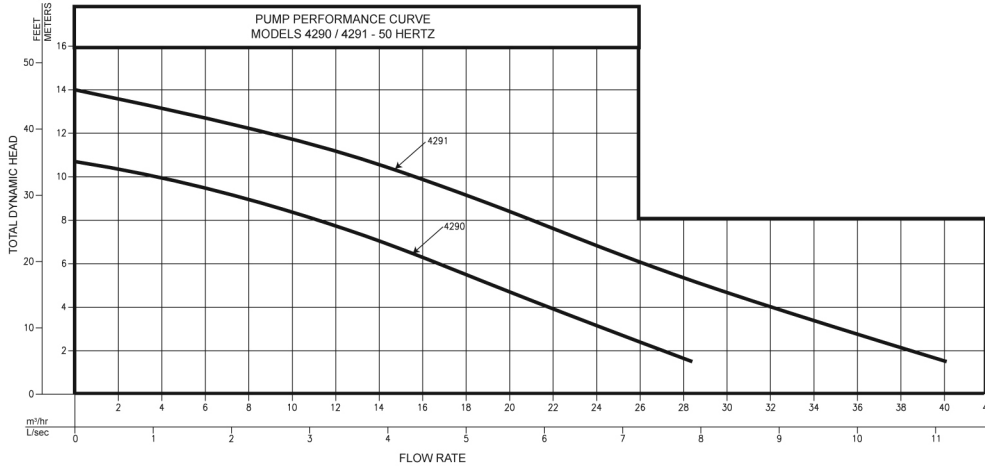
50 Hz



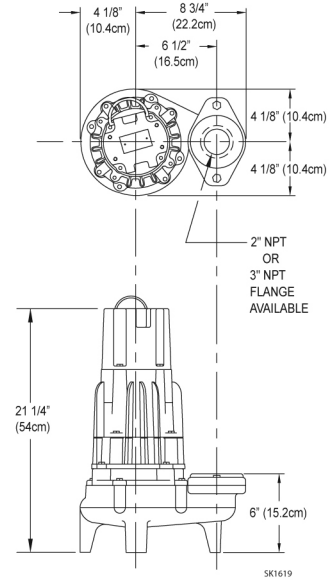
PUMP COMPANY

Zoeller Family of Water Solutions™

High Head Agricultural Pumps



011495



Model

Model Number	Seal	Mode	Volts	Phase	Amps	KW (p1)	Hz	Kg	Lbs
V4290	Double	Non	220	1	5.9	1.4	50	46	101
AK4290	Double	Non	380	3	2.3	1.4	50	46	101
V4291	Double	Non	220	1	14.0	2.8	50	47	104
AK4291	Double	Non	380	3	3.5	2.1	50	47	104

Additional cord lengths are available in 23 m (75') and 30 m (100'). Power cords less than 10 m (33') on CE rated models are intended for indoor use only. All 1 Ph models are available with a type E/F (10 m) or G (10 m) plug. A type I (5 m) plug is available for model V4290 only. Reserve Powered Design: For unusual conditions, a reserve safety factor is engineered into the design of every pump.

Your Peace of Mind is Our Top Priority®
3649 Cane Run Rd | Louisville, KY 40211 USA
+1 502-778-2731 | 1-800-928-7867 | Fax: +1 502-774-3624
www.zoeller.com

Product information presented here reflects conditions at time of publication. Consult factory regarding discrepancies or inconsistencies. Copyright Zoeller Company. All rights reserved.