

**Self-Priming Solids Handling Pumps**

**Specifications:**

**SUCTION/DISCHARGE** .....4" (76mm) Flange Elbow to 3" NPT Suct. x 3" (76mm) 125lb. Flange Discharge

**LIQUID TEMPERATURE** .....160°F (71°C) Continuous

**VOLUTE/WEARPLATE** .....Cast Iron ASTM A-48, Class 30  
Replaceable External Clearance Adjustment

**CASE**.....Cast Iron ASTM A-48, Class 30

**END COVER** .....Cast Iron ASTM A-48, Class 30  
Full Diameter, Removable

**SEAL PLATE** .....Alloy Steel, Replaceable

**PEDESTAL**.....Cast Iron ASTM A-48, Class 30

**IMPELLER: Design** .....Two Vane, Open. Dynamically Balanced, ISO G6.3  
*Material* .....Ductile Iron ASTM A-395

**SHAFT** .....High Carbon Steel

**SHAFT SLEEVE** .....316 Stainless Steel

**SQUARE RINGS** .....Buna-N

**HARDWARE** .....Corrosion Resistant Steel

**PAINT** .....Air Dry Enamel.

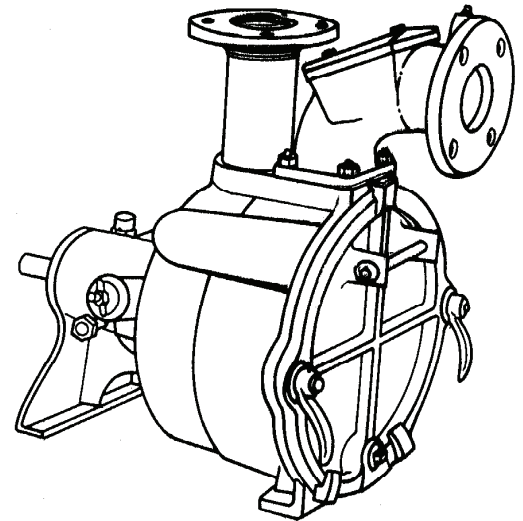
**SEAL: Design** .....Single Mechanical  
*Lubrication* .....Grease, with Self-Feeding Lubricator  
*Material* .....Rotating Faces - Carbon  
Stationary Faces - Ceramic  
Elastomer - Buna-N  
Hardware -300 Series Stainless

**BEARING - PUMP END:**  
*Design* .....Single Row, Ball, Oil Lubricated  
*Load* .....Radial & Thrust

**BEARING - DRIVE END:**  
*Design* .....Single Row, Ball, Oil Lubricated  
*Load*.....Radial & Thrust

**CHECK VALVE:**  
*Material* .....Elbow - Cast Iron ASTM A-48, Class 30  
Valve Flap - Neoprene  
Weight - Cast Iron ASTM A-48, Class 30

**OPTIONAL EQUIPMENT**.....Seal Materials, Case Heater, Stainless Hardware; Double Mechanical Seal, Oil Lubricated w/Pressure Compensating Lubricator; High Temperature Control; Flex Coupled Assy. with Base & OSHA Guard; Right Hand V-Belt Drive Assy. and Left Hand V-Belt Drive Assy., In-Line Vertical V-Belt Drive Assy., and Over Top V-Belt Drive Assy. with Unit Base, Motor Adjusting Base & OSHA Guard



**Model: PO3LC-8L**

Sample Specifications: Section 4 Page 7-8.

**DESCRIPTION:**

SELF-PRIMING CENTRIFUGAL SOLIDS HANDLING PUMPS DESIGNED FOR MUNICIPAL AND INDUSTRIAL APPLICATIONS.



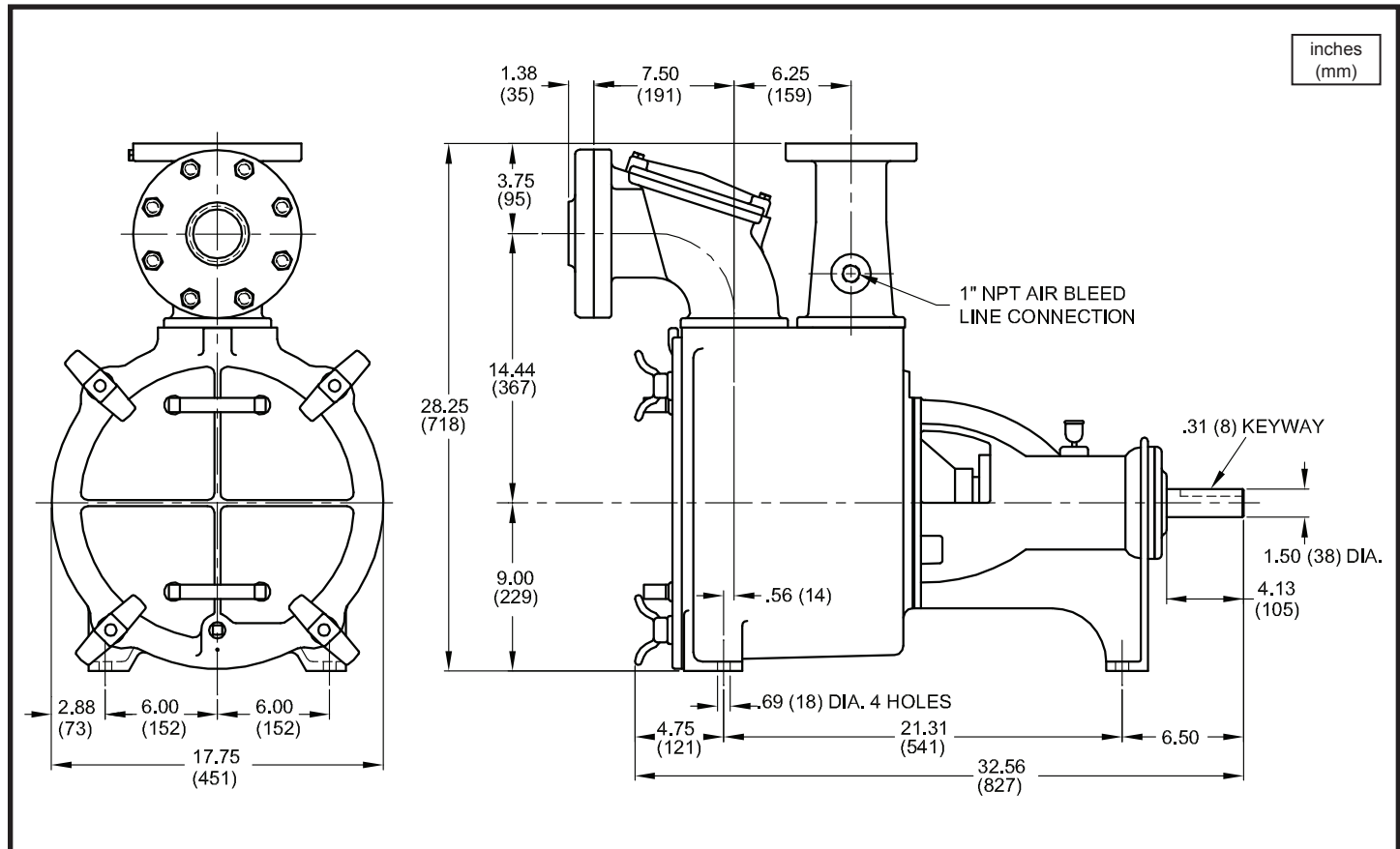
**WARNING:**  
CANCER AND REPRODUCTIVE HARM -  
WWW.P65WARNINGS.CA.GOV

# Model: PO3LC

2-1/2" Spherical Solids Handling  
Universal Drive



## Self-Priming Solids Handling Pumps



MODEL NO	PART NO	WEIGHT LBS. (kg)	
PO3LC-8L	3C06D-0008L-031	440 (200)	

### IMPORTANT !

- DO NOT USE FOR PUMPING FLUIDS WITH A FLASH POINT OF LESS THAN 100°F.
- MAKE CERTAIN THAT PUMP AND/OR MOTOR ASSEMBLY AND CONTROLS HAVE THE APPROPRIATE RATINGS FOR THE GIVEN APPLICATION AREA CLASSIFICATION. (ie DIVISION I, AGENCY LISTING ETC.)

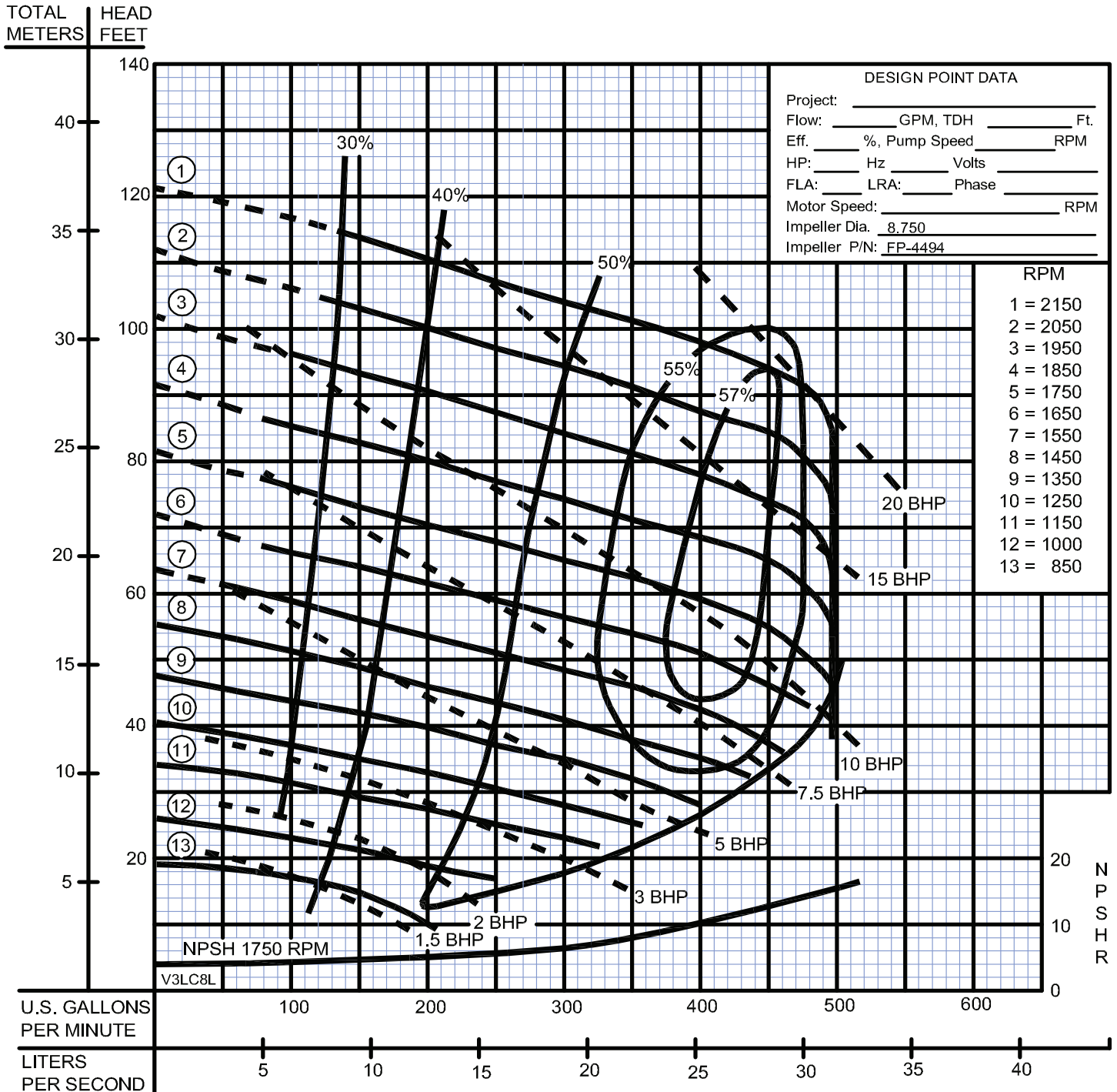
SECTION 4A  
PAGE 12  
DATE 9/10

**CRANE**  
A Crane Co. Company

PUMPS & SYSTEMS

USA: (937) 778-8947 • Canada: (905) 457-6223 • International: (937) 615-3598

## Self-Priming Solids Handling Pumps



MAXIMUM DRY PRIMING LIFT					
PUMP SPEED	2 Min	4 Min	6 Min	8 Min	10 Min
860 RPM	6 Ft.	9 Ft.	10 Ft.	11 Ft.	12 Ft.
1150 RPM	9 Ft.	14 Ft.	17 Ft.	19 Ft.	20 Ft.
1450 RPM	12 Ft.	18 Ft.	22 Ft.	24 Ft.	25 Ft.
1750 RPM	17 Ft.	23 Ft.	25 Ft.	25 Ft.	25 Ft.
1950 RPM	20 Ft.	25 Ft.	25 Ft.	25 Ft.	25 Ft.
2150 RPM	23 Ft.	25 Ft.	25 Ft.	25 Ft.	25 Ft.

When pump is operating, the **SUCTION LIFT** is limited by the available **NPSH** which is the corrected atmospheric pressure minus the dynamic suction lift, vapor pressure loss and 2 foot safety factor. This **net available NPSH** must exceed the **required NPSH** of the pump or a reduction of capacity, loss of efficiency, noise, vibration and cavitation will result. Calculate the dynamic suction lift from the **low** liquid level to the centerline of the impeller. When pump is priming, it is limited by the dry **PRIMING LIFT** which is the vertical distance from the **high** liquid level to the centerline of the impeller.

DO NOT Operate in "DASHED" Area of HQ Curve. Testing is performed with water, specific gravity 1.0 @ 68° F @ (20°C), other fluids may vary performance

# Model: P03LC

Horizontal V-Belt Base, Motor Speed: 1750 RPM  
 V-Belt Drive, Sheaves & Bushings, Pump Shaft: 1.50 Dia.



## Self-Priming Solids Handling Pumps

Driven Speed	Speed Ratio	Motor HP	Frame Size	Center Distance	Drive P/N		Driven Speed	Speed Ratio	Motor HP	Frame Size	Center Distance	Drive P/N
2150	1.23	20	256T	18.6	090818		1400	1.25	7.5	213-215T	17.1	090848
2150	1.23	15	254T	18.6	090819		1400	1.25	5	213T	17.1	090849
							1400	1.25	5	184T	17.1	090850
2100	1.20	20	256T	17.9	090820							
2100	1.20	15	254T	17.9	090821		1350	1.30	7.5	213-215T	17.6	090851
							1350	1.30	5	213T	17.6	090852
2050	1.17	20	256T	18.5	090822		1350	1.30	5	184T	17.6	090853
2050	1.17	15	254T	18.5	090823							
							1300	1.35	5	213T	18.2	090854
2000	1.14	20	256T	17.9	090824		1300	1.35	5	184T	18.2	090855
2000	1.14	15	254T	17.9	090825							
							1250	1.40	5	213T	18.2	090856
1950	1.11	20	256T	18.2	090826		1250	1.40	5	184T	18.2	090857
1950	1.11	15	254T	18.2	090827							
							1200	1.46	5	213T	18.5	090858
1900	1.09	15	254T	18.2	090828		1200	1.46	5	184T	18.5	090859
1900	1.09	10	215T	18.2	090829		1200	1.46	3	182-184T	18.5	090860
1850	1.06	15	254T	17.5	090830		1150	1.52	5	213T	18.4	090861
1850	1.06	10	215T	17.5	090831		1150	1.52	5	184T	18.4	090862
							1150	1.52	3	182-184T	18.4	090863
1800	1.03	15	254T	17.3	090832							
1800	1.03	10	215T	17.3	090833		1100	1.59	3	182-184T	18.2	090864
1750	1.00	15	254T	17.2	090834		1050	1.66	3	182-184T	17.4	090865
1750	1.00	10	215T	17.2	090835							
							1000	1.75	3	182-184T	18.3	090866
1700	1.03	15	254T	17.3	090836		1000	1.75	2	182T	18.3	090867
1700	1.03	10	215T	17.3	090837		1000	1.75	2	145T	18.3	090868
1700	1.03	7.5	213-215T	17.3	090837							
							950	1.84	2	182T	18.2	090869
1650	1.06	10	215T	17.5	090838		950	1.84	2	145T	18.2	090870
1650	1.06	7.5	213-215T	17.5	090838							
							900	1.94	2	182T	18.1	090871
1600	1.09	10	215T	18.2	090839		900	1.94	2	145T	18.1	090872
1600	1.09	7.5	213-215T	18.2	090840							
							850	2.06	2	182T	17.9	090873
1550	1.13	10	215T	17.6	090841		850	2.06	2	145T	17.9	090874
1550	1.13	7.5	213-215T	17.6	090842		850	2.06	1.5	145T	17.9	090875
1500	1.17	10	215T	18.5	090843							
1500	1.17	7.5	213-215T	18.5	090844							
1500	1.17	5	213T	18.5	090844							
1500	1.17	5	184T	18.5	090845							
1450	1.20	7.5	213-215T	17.9	090846							
1450	1.20	5	213T	17.9	090846							
1450	1.20	5	184T	17.9	090847							