

PRODUCT BROCHURE

Sump, Effluent and Sewage Controls

*Control Panels, Alarms and Float Switches
From the Controls Leader You Trust*



 **SJE RHOMBUS®**



www.sjerhombus.com

EZ SERIES®



EZ Series®

This line of innovative, affordable control panels is designed to make on-site installations easier. **EZ Series®** control panels combine **circuit board technology and easy operation** for on-site applications. UL/cUL Listed.

An **optional mounting post** featuring a **removable access door** for easy wiring is available. The post can be mounted directly into the ground, over a 4x4 post or conduit for a **quick, clean, easy installation**.

Get In-Site to On-Site™
EZ Series® In-Site® CL control panels now feature a **Bluetooth® smart module** to enable wireless connection to **Android or iOS devices!**

- ✓ Eliminates need for PC
- ✓ Eliminates opening the panel for configuration, viewing status or data download
- ✓ Enables safe and secure access to the panel in all weather conditions.

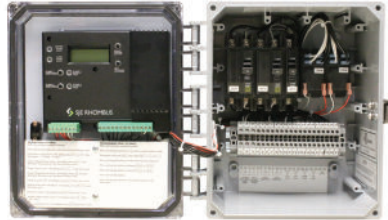


C-LEVEL™ FLOATLESS TECHNOLOGY!

The EZ Series® In-Site® CL Bluetooth® panels utilize the C-Level™ floatless sensor:

- ✓ Uses pressure to detect liquid level in tank and sends signal to the panel
- ✓ Compact design; low voltage
- ✓ Easy to adjust set points
- ✓ One sensor replaces up to 4 floats
- ✓ CL 40 (range up to 40 inches) or CL 100 (range up to 100 inches) models available
- ✓ Two-year limited warranty on C-Level™ Sensor

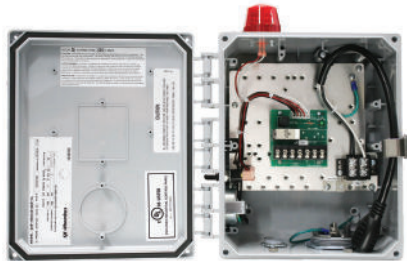
EZ Series® Single Phase Simplex Demand/ Timed Dose and Duplex Demand



Duplex Demand/TD

- Designed to control one or two single phase 120/208/240V pump(s)
- **Panel Features:** NEMA 4X enclosure, locking latch, red LED alarm beacon on cover, external indicators for control power, alarm power and pump run, external test/silence switch, digital display, pump run button, menu buttons, large terminal block, circuit breakers, and pump run relay
- **Digital Display Features:** float status, elapsed time pump run, cycle counter, alarm counts, float error count, auxiliary alarm counter, timer override count (TD only), on time (TD only), off time (TD only)
- UL/cUL Listed

EZ Series® Plugger



- Built-in high water alarm and receptacle to accept a 120V or 230V pump and a piggy-back pump switch
- **Panel Features:** NEMA 4X enclosure, locking latch, red LED alarm beacon, audible alarm, alarm fuse, external test/normal/silence switch
- UL/cUL Listed

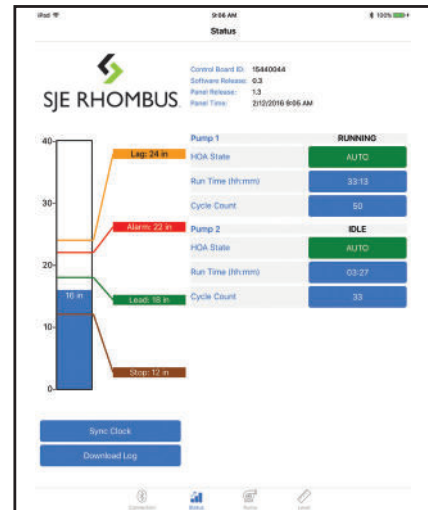
EZ Series® In-Site® CL with Bluetooth® Single Phase Simplex or Duplex Demand/Timed Dose



Duplex Demand/TD

Data logging panel features wireless Bluetooth® connection for your smartphone or tablet. No need to open the panel for configuration, viewing status or downloading data using the new EZ Connect™ Mobile app.

- Designed to control one (simplex) or two (duplex) single phase 120/208/240V pump(s)
- Panel configuration can be easily converted in the field to either demand dose or timed dose using a tablet or smartphone
- System data including pump run times, pump cycles, alarm conditions, power outages, and more can be downloaded to the same mobile device using the exclusive EZ Connect Mobile App.
- UL/cUL Listed



EZ Connect™ Mobile App

The Bluetooth® word mark and logos are registered trademarks owned by Bluetooth SIG, Inc. and any use of such marks by SJE Rhombus® is under license. Other trademarks and trade names are those of their respective owners.

INSTALLER FRIENDLY SERIES®

IFS Single Phase Simplex or Duplex Demand/Timed Dose



- Designed to control one (simplex) or two (duplex) 120/208/240V single phase pump(s) in water and sewage installations
- LCD interface is standard feature
- Panel configuration can be easily converted in the field to either demand dose or timed dose
- UL/cUL Listed

IFS Three Phase Simplex or Duplex Demand/Timed Dose



- Designed to control one (simplex) or two (duplex) 208/240/480V three phase pump(s) in water and sewage installations
- Digital display is standard feature
- Panel configuration can be easily converted in the field to either demand dose or timed dose
- UL/cUL Listed

IFS Single Phase Simplex or Duplex Capacitor Start/Run



- Designed to control one (simplex) or two (duplex) 120/208/240V single phase pump(s) in water and sewage installations
- IEC motor contactor controls pump by switching electrical lines
- Capacitor start module - must be ordered separately or supplied
- UL/cUL Listed

IFS In-Site® Single Phase Simplex or Duplex Demand/Timed Dose



Get In-Site to On-Site Systems™ Data logging control panel features a USB port on the inner door. Plug in the flash drive (included with pre-loaded software) to download up to 20,000 system events, including pump run times, pump cycles, alarm events, power outages, and service calls. Quick and easy-to-read reports make identifying system conditions easy.

- Designed to control one (simplex) or two (duplex) single phase 120/208/240V pump(s)
- Panel configuration can be easily converted in the field to either demand dose or timed dose
- UL/cUL Listed

Installer Friendly Series® Single Phase Simplex Drip



- Designed to control one 120/230V single phase pump
- Features a touch pad for programming rest for standard time, rest for peak enable time, spin filter flush time, dose time, field flush time, and field drain time
- NEMA 4X enclosure
- UL/cUL Listed

Time Stamp	Event	Device	Phase	Run Time	Start Count	Stop Count	Run Lead	Power Outage	Power Count	Off Count	Alarm Count	Rest Count	Field Flush	Field Drain
10/15/2015 10:00:00	Alarm On	Panel 1	SP	00:00	00	00	00	00	00	00	00	00	00	00
10/15/2015 10:00:00	Alarm Off	Panel 1	SP	00:00	00	00	00	00	00	00	00	00	00	00
10/15/2015 10:00:00	Power On	Panel 1	SP	00:00	00	00	00	00	00	00	00	00	00	00
10/15/2015 10:00:00	Power Off	Panel 1	SP	00:00	00	00	00	00	00	00	00	00	00	00
10/15/2015 10:00:00	Pump On	Panel 1	SP	00:00	00	00	00	00	00	00	00	00	00	00
10/15/2015 10:00:00	Pump Off	Panel 1	SP	00:00	00	00	00	00	00	00	00	00	00	00
10/15/2015 10:00:00	Rest On	Panel 1	SP	00:00	00	00	00	00	00	00	00	00	00	00
10/15/2015 10:00:00	Rest Off	Panel 1	SP	00:00	00	00	00	00	00	00	00	00	00	00
10/15/2015 10:00:00	Field Flush On	Panel 1	SP	00:00	00	00	00	00	00	00	00	00	00	00
10/15/2015 10:00:00	Field Flush Off	Panel 1	SP	00:00	00	00	00	00	00	00	00	00	00	00
10/15/2015 10:00:00	Field Drain On	Panel 1	SP	00:00	00	00	00	00	00	00	00	00	00	00
10/15/2015 10:00:00	Field Drain Off	Panel 1	SP	00:00	00	00	00	00	00	00	00	00	00	00

Event Log Screen displays a complete list of all system events



Installer Friendly Series®

The Installer Friendly Series® control panels utilize embedded circuit board technology to provide greater control of septic systems via a **simple-to-use touch pad** on the inner door for programming and monitoring pump and float operation for on-site applications. UL/cUL Listed.

Touch Pad Display Features:

- ✓ Easy programming for pump control
- ✓ Pump run indicator(s)
- ✓ Float status indicators, including float out-of-sequence alarm
- ✓ HOA pump control switch(es)
- ✓ Hand mode safety feature
- ✓ 6 digit LED display includes:
 - Elapsed time meter(s)
 - Cycle counter(s)
 - Alarm counter
 - Lead/lag selector toggles pump operation in duplex models
 - Float error counter
 - Override counter in timed dose models

Single Phase LCD Interface Features:

- ✓ Full color graphics and menu navigation encoder for easy setup
- ✓ Touch safe housing
- ✓ Pump Hand/Off/Auto Control selectable via menu navigation
- ✓ C-Level™ Sensor or Float operation selectable via menu navigation
- ✓ Demand or Timed Dose operation selectable via menu navigation
- ✓ Tank Level Indication and setpoint monitoring at-a-glance
- ✓ Lead pump is easily identified by a graphic ring around the current lead pump regardless of control mode (timed dose or demand)
- ✓ Displays remaining time in each active ON or OFF Timed Dose mode, as well as at-a-glance ON or OFF time elapsed graphic around lead pump
- ✓ RJ45 communication connector
- ✓ Flashing function for alarm beacon and horn (configurable)
- ✓ Manual alarm reset (configurable)

BUILD-A-PANEL™



Build-A-Panel™

SJE Rhombus Build-A-Panel™ control panels offer **pump control and alarm notification** in one convenient package for a variety of on-site applications, including pump chambers, sump pump basins, irrigation systems, lift stations and more.

Build-A-Panel™ Control Panel Models:

- ✓ NEX Series® Simplex & Duplex
- ✓ Single Phase Simplex (115, 112)
- ✓ Single Phase Duplex (122)
- ✓ Three Phase Simplex (312)
- ✓ Three Phase Duplex (322)
- ✓ Capacitor Start/Run (113, 123)
- ✓ Intrinsically Safe (114, 124, 314, 324)
- ✓ Time Dosing (TD, PS11/PS12)
- ✓ Plugger Products (JBP, PS Patrol®, Quick Post Plus™ Outdoor System, Quick Post Plus™ System with Indoor Alarm, UltraNator™, SJE Oil Spotter™, SJE Oil Spotter™ Auto)

Build-A-Panel™ control panels are the right option for your installation. Ordering by options provides you with **greater flexibility**, allowing you customize “standard” control panels to suit your specific needs, whether adding an elapsed time meter, cycle counter or changing float switches. Your Build-A-Panel™ control panels will be **delivered quickly**, at an **affordable price**. UL/cUL Listed.

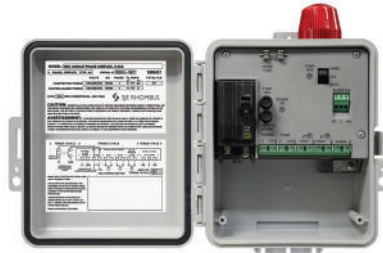


Each Build-A-Panel™ control panel comes complete with float switches, electrical schematics, float terminal blocks, step-by-step installation instructions and are backed by a five-year limited warranty.

Need your panel in a hurry? Don't worry!

SJE Rhombus offers the Panel Express Program to expedite your panels as fast as the next day! Learn more at www.sjerrhombus.com.

NEX Series® Single Phase Simplex



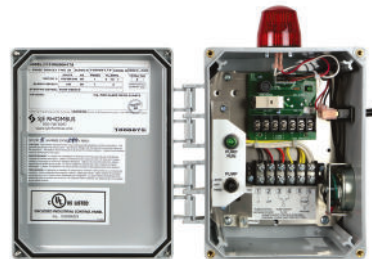
- Designed to control one single phase pump in water and wastewater applications
- Universal pump voltage and control/alarm power allows the panel to handle three voltages (120/208/240V)
- Compact NEMA 4X enclosure
- UL/cUL Listed

NEX Series® Single Phase Duplex



- Designed to control two single phase pumps in water and wastewater applications
- Universal pump voltage and control/alarm power allows the panel to handle three voltages (120/208/240V)
- Compact NEMA 4X enclosure
- UL/cUL Listed

Model 115 Single Phase Simplex



- Provides a reliable means of controlling one 120/208/240V single phase pump in water and wastewater applications
- NEMA 1 or NEMA 4X enclosure
- Pump switch turns pump on/off
- Alarm switch activates alarm
- UL/cUL Listed

Model 112 Single Phase Simplex



- Provides a reliable means of controlling one 120/208/240V single phase pump in water and wastewater applications
- Touch safe circuit board housing and low voltage 24 VDC float circuits
- Alarm (field programmable to flash)
- Alarm automatic reset (field programmable to manual alarm reset)
- Float out-of-sequence detection
- Pump contactor failure detection
- Controller protected by three auto resettable fuses (control, alarm, and pump 1)
- NEMA 4X enclosure
- UL/cUL Listed

Model 122 Single Phase Duplex



- Designed to alternately control two 120/208/240V single phase pumps in water and wastewater applications
- Innovative duplex controller for pump control, alternation, and alarm
- NEMA 1 or NEMA 4X enclosure
- New NEMA 4X enclosure designed for easy installation
- Alternating pump control with override equalizes pump wear
- UL/cUL Listed

Model 312 Three Phase Simplex



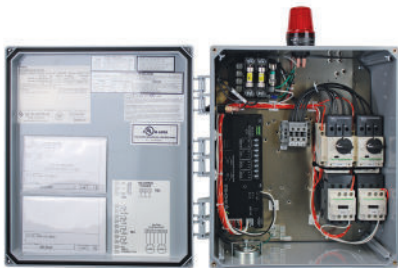
- Provides a reliable means of controlling one 208/240/480V three phase pump in commercial and industrial water and wastewater applications
- NEMA 4X enclosure
- IEC motor contactor control
- UL/cUL Listed

Model 113 Single Phase Simplex



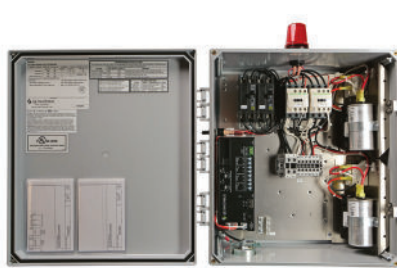
- Provides a reliable means of controlling one 120/208/240V single phase pump requiring external starting components
- NEMA 4X rated enclosure
- Capacitor start/run pump control
- UL/cUL Listed

Model 322 Three Phase Duplex



- Designed to alternately control two 208/240/480V three phase pumps in commercial and industrial water and wastewater applications
- Innovative duplex controller for pump control, alternation, and alarm
- NEMA 4X enclosure
- Alternating pump control with override equalizes pump wear
- UL/cUL Listed

Model 123 Single Phase Duplex



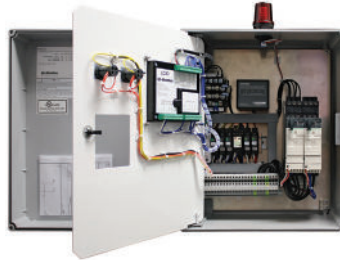
- Provides a reliable means of controlling two alternating 120/208/240V pumps requiring external starting components
- Innovative duplex controller for pump control, alternation, and alarm
- NEMA 4X enclosure
- Capacitor start/run pump control with override
- UL/cUL Listed

Model 32S Industrial Grade Three Phase Duplex



- Designed to alternately control two 208/240/480V three phase pumps in commercial and industrial water and wastewater applications
- Features DPC-4F controller
- NEMA 4X stainless steel or fiberglass enclosure
- Alternating pump control with override equalizes pump wear
- UL/cUL Listed

Model 32XR Industrial Grade Three Phase Duplex



- Designed to alternately control two 208/230/460V three phase pumps in commercial and industrial water and wastewater applications
- TYPE 4X fiberglass enclosure
- TPC-X Controller sequences pump on and off in response to a change in level input provided by a 4-20 mA sensor
- UL/cUL Listed



Capacitor Start/Run

SJE Rhombus offers motor control panels designed specifically for grinder pump applications or other pumps requiring **external motor starter kits**. Common applications include pump chambers and lift stations. UL/cUL Listed.

- ✓ Single Phase Simplex (113)
- ✓ Single Phase Duplex (123)

BUILD-A-PANEL™



Intrinsically Safe

Intrinsically safe Build-A-Panel™ control panels are designed for applications requiring **intrinsically safe float circuits** or **other circuit extensions**.

SJE Rhombus has secured an Underwriters Laboratory (UL) dual safety certification for Canada and the United States, **cUL/US Listing**, on control panels with intrinsically safe circuits.

Common applications for intrinsically safe panels include pump chambers, lift stations, and other applications classified as hazardous locations requiring intrinsically safe circuits.

- ✓ Single Phase Simplex I.S. (114)
- ✓ Single Phase Duplex I.S. (124)
- ✓ Three Phase Simplex I.S. (314)
- ✓ Three Phase Duplex I.S. (324)

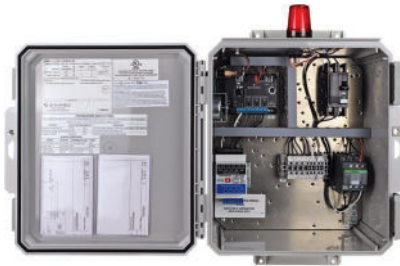


Timed Dose

For systems requiring a timed dose (sand filter, pressure distribution, mound systems, etc.). Timed dosing control panels feature a **programmable timer** which activates the magnetic motor contactors to turn the pump(s) on and off. UL/cUL Listed.

- ✓ Single Phase Simplex (TD)
- ✓ Single Phase Simplex and Duplex - Sand Filter (PS11, PS12)

Model 114 I.S. Single Phase Simplex



- Designed to control one 120/208/240V single phase pump in intrinsically safe applications
- NEMA 4X enclosure
- Two control switches activate an IEC magnetic motor contactor to turn the pump on and off
- UL/cUL Listed

Model 314 I.S. Three Phase Simplex



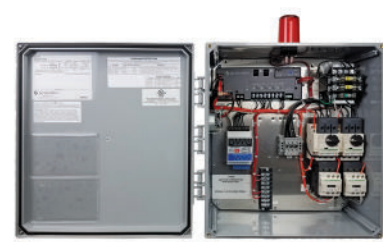
- Designed to control one 208/240/480V three phase pump in intrinsically safe applications
- NEMA 4X enclosure
- Two control switches activate an IEC magnetic motor contactor to turn the pump on and off
- UL/cUL Listed

Model 124 I.S. Single Phase Duplex



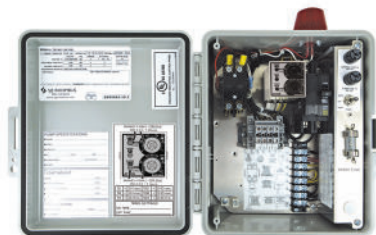
- Designed to control two alternating 120/208/240V single phase pumps in intrinsically safe applications
- Innovative duplex controller for pump control, alternation, and alarm
- NEMA 4X enclosure
- Alternating pump control with override equalizes pump wear
- IEC motor contactor control
- UL/cUL Listed

Model 324 I.S. Three Phase Duplex



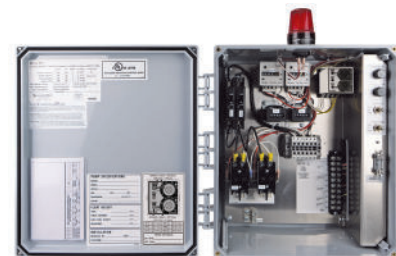
- Designed to control two alternating 208/240/480V three phase pumps in intrinsically safe applications
- Innovative duplex controller for pump control, alternation and alarm
- NEMA 4X enclosure
- Alternating pump control with override equalizes pump wear
- IEC motor contactor control
- UL/cUL Listed

Model TD Single Phase Simplex



- Designed to control one 120/208/240V single phase pump in timed dose applications
- NEMA 4X enclosure
- Programmable timer/motor contactor control with override
- UL/cUL Listed

PS11/PS12 Single Phase



- Provides reliable means of controlling both pump chamber and sand filter pumps in an onsite septic installation
- Two independent motor contactor control/programmable timed dosing control panel
- NEMA 4X enclosure
- PS11 (120V) PS12 (240V)
- UL/cUL Listed

JB Plugger System



- Easy-to-install junction box which provides a convenient location to connect all wiring required for pump station applications; features a receptacle to accept a 120/230V pump plug and/or a piggy-back pump switch
- NEMA 4X enclosure, hinged door
- UL/cUL Listed

Ultra Nator™ System



- Control/alarm system designed to control two single phase alternating pumps; features two receptacles for easy pump connections and factory-installed pump activation and alarm activation switches
- NEMA 1 enclosure for indoor use
- Audible and visual alarm
- UL/cUL Listed

Quick Post Plus™ System with Indoor Alarm



- Convenient wiring connection and system monitoring for pump station application
- Factory installed 22" mounting post with access door for easy wiring
- Complete kit includes: 8" x 8" x 4" NEMA 4X enclosure with mounting post, 120V or 230V receptacle, Tank Alert® AB indoor alarm, riser extension kit, (2) cord seals, control switch - optional ETM, DUO available
- UL/cUL Listed

PS Patrol® System



- Enhanced design features a sleek, angled removable clear cover for easy access field wiring
- Red LEDs illuminate top of cover in alarm condition for 360° visual
- Receptacle for connection of pump and piggy-back pump switch
- Includes cord seal
- Pedestal rated for outdoor use
- Available with or without mounting post
- CSA Certified

Quick Post Plus™ Outdoor System



- Convenient wiring connection and system monitoring for pump station application
- Factory installed 22" mounting post with access door for easy wiring
- Complete kit includes: 8" x 8" x 4" NEMA 4X enclosure with mounting post, 120V or 230V receptacle, integral alarm, riser extension kit, (2) cord seals, control switch - optional ETM, DUO available
- UL/cUL Listed

SJE Oil Spotter™/Oil Spotter™ Auto System



- Designed to control one single phase pump used to remove water from elevator pits while preventing oil from being pumped into the environment; features innovative factory-installed Oil Water Switch; receptacle accepts 120V pump plug
- NEMA 1 enclosure for indoor use
- UL/cUL Listed, ASME A17.1 Compliant
- Oil Spotter™ Auto includes auto/hand pump switch



Plugger Products

Plugger products feature a receptacle to accept a 120/230V pump plug and/or a piggy-back plug for typical pumping station applications.

- ✓ JB Plugger System
- ✓ Quick Post Plus™ Outdoor System
- ✓ Quick Post Plus™ System with Indoor Alarm
- ✓ Ultra Nator™ System
- ✓ PS Patrol® System

Don't see the control panel you need for your application?

Our **Build-A-Panel™ PLUS Program** is designed to benefit customers who require additional options beyond what our standard control panel line offers, but do not require a custom engineered solution. The **Build-A-Panel™ PLUS Program** utilizes inventoried components to allow for:

- ✓ Quality, flexibility and economical
- ✓ 24-hour quote response
- ✓ Larger enclosure sizes
- ✓ Multiple pumps



Ask about our new ACCEL® Panel Program

- ✓ Pre-engineered base models
- ✓ Same day quotes
- ✓ Self-service quote tool
- ✓ 24 hour submittals
- ✓ 10 day build-to-ship (subject to change based on component availability)

PRESSURE CONTROLS



Constant Speed Controls

- ✓ WellZone™ 2-Wire Pressure Controller
- ✓ WellZone™ 3-Wire Pressure Controller
- ✓ Model 126
- ✓ Select Start



Variable Speed Controls

- ✓ H2O Drive®
- ✓ VARIOspeed® N1
- ✓ VARIOspeed® 3R/3R Duplex
- ✓ Endura™ Pressure Booster

WellZone™ 2-Wire Pressure Controller



- Provides pressure control for single phase 2-wire submersible pump applications
- LCD display with bar graph (pressure, pump amps, pump on)
- Adjustable pressure set points
- Includes 0-150 PSI pressure transducer
- NEMA 4X enclosure
- UL/cUL Listed

WellZone™ 3-Wire Pressure Controller



- Provides pressure control for single phase 3-wire submersible pump applications
- LCD display with bar graph (pressure, pump amps, pump on)
- Adjustable pressure set points
- Includes 0-150 PSI pressure transducer
- NEMA 4X enclosure
- UL/cUL Listed

Model 126 Single Phase Duplex



- Designed to alternately control two 120/208/240V single phase pumps in water well applications; provides override control to maintain pressure
- NEMA 1 or NEMA 4X enclosure
- Available with contactors or without contactors
- UL/cUL Listed

Select Start™ Starter Boxes Three Phase Motor Control



- Field select voltage: 208V, 240V or 480V
- Indoor/outdoor enclosure
- Self protected combination motor controller turns motor on/off
- Adjustable motor overload covers wide amp range
- Optional through door pump disconnect
- UL/cUL Listed

H2O Drive® Constant Pressure Control



- NEMA 3R indoor/outdoor enclosure
- Quick start wizard for easy setup
- Removable/handheld graphic color display (LCD)
- Pump dry run alarm
- Well recharge timer function
- High and Low Pressure Alarm
- Pump motor overload protection
- Monitors transducer faults
- Includes pressure transducer
- 2 digital inputs for optional level or floor sensor
- 60Hz max. motor speed (default)
- UL/cUL Listed

VARIOspeed® N1 Control Panel



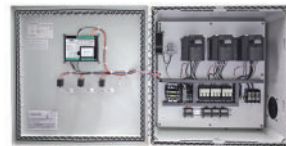
- NEMA 1 indoor enclosure
- Factory pre-programmed variable frequency drive
- Available HP range (208V-240V) 1.5-20 HP; (480V) 3-20 HP
- 4 line/20 character back-lit LCD display
- Includes pressure transducer
- UL/cUL Listed

VARIOspeed® 3R Control Panel



- NEMA 3R indoor/outdoor enclosure
- Factory pre-programmed VFD
- Available HP range (208V-240V) 1.5-20 HP; (480V) 3-20 HP
- 4 line/20 character back-lit LCD display
- Includes pressure transducer
- Includes fan and thermostat on 7.5-20 HP models
- 3R Duplex models available
- UL/cUL Listed

Endura™ Pressure Booster Control Panel



- Simple display with pressure and pump status
- Fast and intuitive menu navigation and setup
- Elapsed Time and Cycle Counter for each pump
- Low pressure alarm (pipe burst or run dry protection)
- High pressure alarm and protection
- System fault log
- Standard package includes (1) 0-200 PSI pressure transmitter 1/4" NPT Male, NEMA 4X rated with 6m (20 ft of cable)
- UL/CUL Listed

ALARM SYSTEMS

Xpert Alert® Alarm



- Indoor alarm features 2 sensor inputs to monitor 2 separate level conditions
- LED alarm light ring illuminates red for alarm 1 and amber for alarm 2
- Red low temperature LED activates when temperature falls below 40°F (4°C)
- Large test/silence button on front
- Includes auxiliary contacts
- CSA certified

Xpert Alert® WiFi Alarm



- Indoor alarm features 2 sensor inputs to monitor 2 separate level conditions
- LED alarm light ring illuminates red for alarm 1 and amber for alarm 2
- Red low temperature LED activates when temperature falls below 40°F (4°C)
- Large test/silence button on front
- Includes auxiliary contacts
- Provides 24/7 remote notification up to 4 contacts (2 email, 2 text)
- Text/email alerts: alarm offline, power out/restored, low temperature/battery
- Optional water sensor available
- CSA certified

Xpert Alert® RF Alarm



- Wireless technology connecting an outdoor control panel to an Xpert Alert® or Xpert Alert® WiFi alarm
- Up to 200 ft. communication range
- LED indicators for signal strength (green) and alarm (amber)
- Lost communication alarm
- NEMA 4X configurations available for standard and WiFi models
- WiFi model includes Xpert Alert® WiFi alarm, RF receiver module, and RF panel model; provides 24/7 notification (2 emails, 2 SMS text) to smart device of potential conditions

Tank Alert® AB Alarm



- The Tank Alert® AB indoor alarm offers auto reset and battery backup features. The horn sounds when a potentially threatening liquid level occurs
- NEMA 1 rated for indoor use
- Red alarm light, green power light, alarm test switch, horn silence switch
- Indoor DUO models available
- UL Listed; CSA Certified

Tank Alert® I Alarm



- The Tank Alert® I indoor alarm sounds when a potentially threatening liquid level occurs. Alarm (when installed on separate circuit) operates even if pump circuit fails
- NEMA 1 rated for indoor use
- Red alarm light, green power light, alarm test switch, horn silence switch
- UL Listed; CSA Certified

Tank Alert® EZ Alarm



- Tank Alert® EZ indoor/outdoor alarm features removable cover for easy installation
- Sleek, innovative design features a distinct 2-color molded enclosure
- Integrated LED beacon
- External mounting tabs
- Alarm test/silence switch
- DUO models available
- CSA Certified

Tank Alert® XT Alarm



- Indoor/outdoor alarm meets NEC standards for junction boxes. OPTION: Pre-mounted terminal block so enclosure can be used as junction box for cord splices
- Rain-tight outdoor enclosure
- Automatic alarm reset, horn silence switch, alarm test switch
- UL Listed; CSA Certified

Tank Alert® 4X Alarm



- The Tank Alert® 4X indoor/outdoor alarm sounds when a potentially threatening liquid level condition occurs
- NEMA 4X enclosure
- Automatic alarm reset, alarm test/normal/silence switch
- Optional auxiliary alarm contacts
- UL/cUL Listed

Tank Alert® Solar Alarm



- Powered by a rechargeable battery via 12 VDC, 10 watt solar panel
- Lithium Ion batteries provide backup power
- Safe, low voltage connections for solar panel and float
- NEMA 4X enclosure rated for indoor or outdoor use
- Integral mounting tabs for easy installation

Pump Switches

Wide-angle pump switches directly control pumps up to 3 HP at 250 VAC. Each switch features an adjustable pumping range.

Control Switches

Narrow-angle control switches accurately monitor high (normally open) or low (normally closed) liquid level conditions in water and sewage applications to activate control panels and alarms. Select models have colored caps for easy identification.



Pump Switch	Type of Activation	Pump Control	Max Pump Run Current	Max Pump Start Current	Pumping Range
SJE PumpMaster® WPS	Mechanical	1/2 HP, 120V 1 HP, 230V min load: 120V, 100mA	13A, 120V 13A, 230V	85A, 120V 85A, 230V	7 to 36 inches
SJE PumpMaster®	Mechanical	1/2 HP, 120V 1 HP, 230V	13A, 120V 13A, 230V	85A, 120V 85A, 230V	7 to 36 inches
SJE PumpMaster® Plus	Mechanical	3/4 HP, 120V 2 HP, 230V	15A, 120V 15A, 230V	85A, 120V 85A, 230V	7 to 36 inches
SJE PumpMaster® SPDT (Single Pole, Double Throw)	Mechanical	1/2 HP, 120V 1 HP, 230V	13A, 120V 13A, 230V	85A, 120V 85A, 230V	7 to 36 inches
Double Float® Master	Mechanical	15 FLA, 90 LRA 120 or 240 V	15A, 120V 15A, 230V	90A, 120V 90A, 230V	4 to 48 inches (wider available)
SJE AmpMaster®	Mechanical	1 1/2 HP, 120V 3 HP, 250V	20A, 120V 20A, 230V	120A, 125V 120A, 250V	9 to 24 inches
SJE VerticalMaster® 3 Plus (For Limited Space Applications)	Mechanical	1/2 HP, 120V 1 HP, 230V	13A, 120V 13A, 230V	60A, 120V 78A, 230V	.75 to 6.5 inches
SJE MicroMaster® AC/DC	Mechanical	Use Pump Run and Start Current	10A, 12VDC/125VAC 8A, 250VAC	100A, 12VDC 60A, 125V/250V	8 to 36 inches
SJE MicroMaster® Plus WS	Mechanical	Use Pump Run and Start Current	13A, 125V 12A, 250V	78A, 125V 72A, 250V	8 to 36 inches
Junior Super Single®	Mercury	1/2 HP, 120V 1 HP, 230V	13A, 120V 8A, 230V	40A, 120V 20A, 230V	6.5 to 19 inches
Double Float®	Mercury	1 HP, 120V 2 HP, 230V	15A, 120V 12A, 230V	55A, 120V 35A, 230V	1.75 to 48 inches (wider available)
SJE HiTempMaster™	Mechanical	Use Pump Run and Start Current	13A, 120V 12A, 230V	78A, 125V 72A, 250V	8 to 36 inches

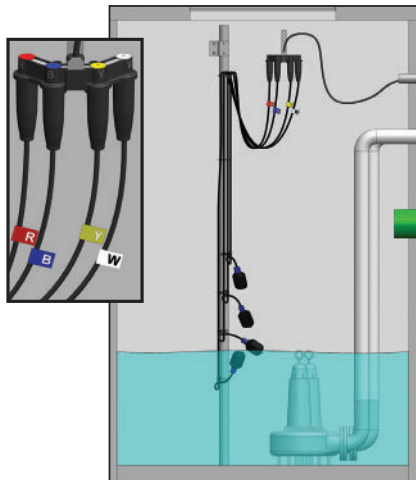
Control Switch	Type of Activation	Control Differential	Electrical Rating	Mounting Options
EZconnex® 3 or 4-Port Float Connection System	Mechanical	Narrow 1.5 inches; Wide 4 inches above or below horizontal	125VAC/30VDC 0.160mA-A; 5VDC 1mAmin.	Mounting Clamp
SJE MegaMaster®	Mechanical	Approximately 10° above or below horizontal	1 mA - 1 amp 4VDC - 125VDC	Float Bracket
SJE SignalMaster® (NO - Yellow Cap; NC - White Cap)	Mechanical	Approximately 1.5 inches above or below horizontal	5 amp 125V or 250V	Mounting Clamp or Cable Weight
SJE SignalMaster® SPDT (Single Pole, Double Throw; Green Cap)	Mechanical	Approximately 1.5 inches above or below horizontal	5 amp 125V or 250V	Mounting Clamp or Cable Weight
SJE MilliAmpMaster™ WPS (Narrow-Angle; Orange Cap)	Mechanical	Approximately 1.5 inches above or below horizontal	0.160 - 100 mA 5V - 125V	Mounting Clamp
SJE MilliAmpMaster™ (Narrow-Angle or Wide-Angle; Blue Cap)	Mechanical	Narrow 1.5 inches; Wide 4 inches above or below horizontal	0.160 - 100 mA 5V - 125V	Mounting Clamp or Cable Weight
Sensor Float®	Mercury	Approximately .5 inches above or below horizontal	5 amp 120V or 230V	Mounting Clamp, Cable Weight, Internal Weight
Sensor Float® Mini	Mercury	Approximately .5 inches above or below horizontal	5 amp 120V or 230V	Mounting Clamp or Cable Weight

FLOATS & ACCESSORIES

EZconnex® Float Connection System



- 3 or 4-port quick release float connection ports makes installation and maintenance easy
- A single multi-conductor direct burial cable with shield
- Manifold features color coded system to match Red-Blue-Yellow-White cable wire pairs for easy float identification
- Rated for short term water submersion
- Includes mounting bracket
- Designed for use with EZconnex® float switches (not included with manifold; float switches must be ordered separately)
- Rubber boot provides a dual seal design for an extra layer of protection to keep connections clean and dry
- Patented, CSA Certified



Sub-X™ Transmitter

US Patent
8,336,385



- Submersible level transmitter with 4-20mA output
- Available in 7.25 PSI (16.7 ftWC) and 14.5 PSI (33.4 ftWC) ranges
- Includes mounting bracket

C-Con™ Converter Box



Available with CL40 model only.

- Allows most control panels to utilize floatless C-Level™ sensor
- NEMA 1 rated for indoor use
- Can be mounted inside a panel
- Green power on indicator
- Four adjustable output set points with red LED status indicators
- Adjust pump start/stop and alarm levels from converter box
- Simulate button for testing proper wiring of outputs
- Factory-installed input/output wires
- Alternative to mercury switches
- UL/cUL Listed
- Five-year limited warranty on C-Con™
- Two-year limited warranty on C-Level™ Sensor

SJE Level Monitor™ CL



- Monitors tank levels using floatless C-Level™ sensor
- NEMA 1 rated for indoor use
- Power on and alarm indicators
- 10 segment LED bar graph displays level in the tank
- Test/silence, alarm level and set buttons
- Various cable lengths to monitor tanks up to 300 feet away
- Auxiliary contacts for Class II circuits
- Five-year limited warranty on SJE Level Monitor™ CL
- Two-year limited warranty on C-Level™ Sensor

Float Accessories



- Cable Clamp Assembly provides strain relief and anchor of cables
- Float Brackets (4-6 floats) for installation of float switches
- Pipe Mounting Bracket to secure discharge pipe to basin wall
- Cable Weight/Cable Weight Mini provide pivot point for floats
- ETM records total pump run time
- Vertical Reed Switch is alternate control switch for specific needs
- Anchor and Chain for suspended float switch installations

Control Panel Accessories



- Junction Boxes provide convenient location to connect and protect wiring
- Cord Seal provides strain relief and a liquid-tight seal for 1-4 or 1-6 cables
- Cable Connectors (round or flat) for liquid-tight seal and strain relief
- Hub Assembly provides liquid-tight conduit attachment location
- Panel Mounting Post provides easy installation of control panels
- Riser Mounting Kit secures panel mounting post to tank riser
- Simplex/Duplex Installation Kit provides easy weather-proof wire installation for control panels
- C-Level™ Simulator is designed to generate an adjustable C-Level simulation signal
- 4-20mA Simulator is designed to generate an adjustable 4-20mA signal from loop power



ABOUT SJE RHOMBUS®

SJE Rhombus provides **smart control solutions** for today's growing environmental challenges. We combine over **45 years of expertise** in pump controls with the **latest technology** to deliver **energy efficient, cost-effect products** for a wide variety of residential, commercial, municipal and industrial applications.

No matter the application, SJE Rhombus has a control solution to fit your needs, whether it's a simple float switch or septic tank alarm to control panels utilizing embedded circuit board technology for advanced programming, monitoring and reporting of your system. And if we don't have it in our standard catalog, we can design and build a **custom control solution** to meet your exact specifications.

New product designs endure extensive in-house and field testing before submittal to recognized independent laboratories for safety testing and approval (UL, cUL, CSA). This commitment to quality ensures you a dependable, trouble-free product. We are so confident in our products, that we offer an industry-leading **five-year limited warranty** on most standard catalog products.

With SJE corporate headquarters located in Minnesota, SJE has multiple locations across the USA, Mexico and Asia. From engineering to production to customer service, each and every employee takes **great pride** in providing the quality products and service that SJE Rhombus offers.

SJE Rhombus offers the **best one-on-one customer support** in the industry. Our **friendly, knowledgeable staff** is prepared to answer any questions, from assisting in selecting the correct product for the application to answering installation questions in the field. Learn more about us at www.sjrhombus.com.



SJE RHOMBUS®

22650 County Highway 6
Detroit Lakes, MN 56501 USA
Toll Free: 888-342-5753
Phone: 218-847-1317
Fax: 218-847-4617
Email: sje@sjeinc.com
www.sjrhombus.com

In addition to many state on-site and rural water associations, SJE Rhombus® is proud to be members of these national industry associations:

